

## AID remote support

(Installation of software and its configuration. Main steps)

### Installation of Modem, its software and driver

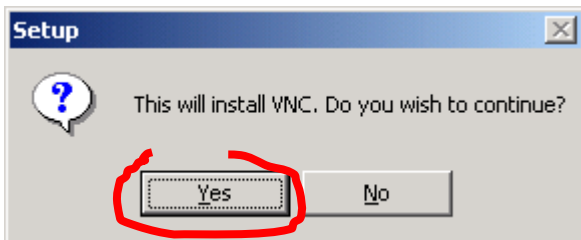
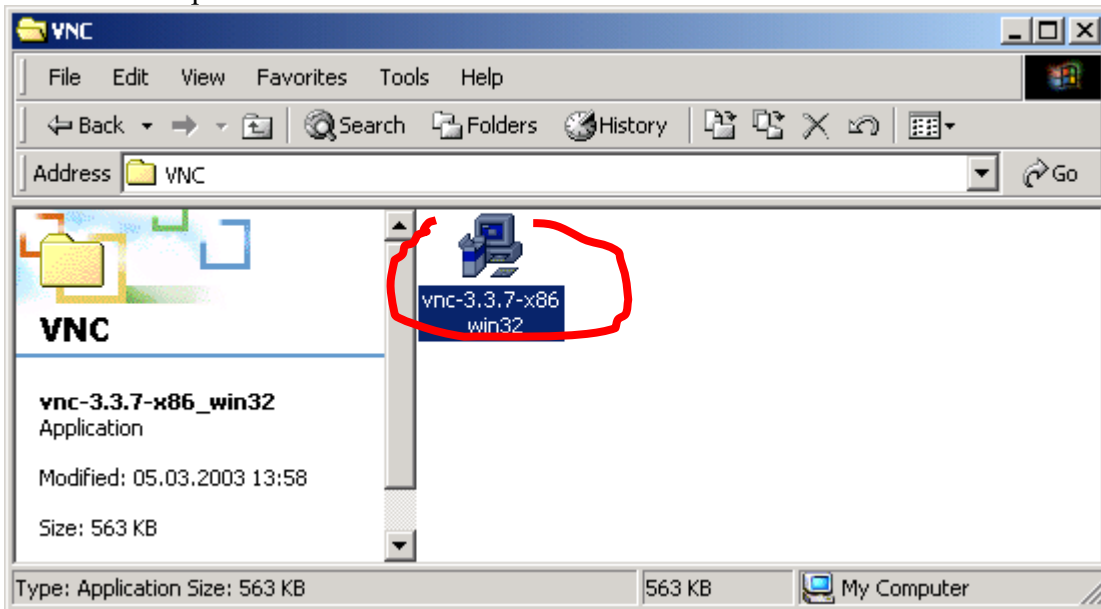
(Look description in Modem documentation)

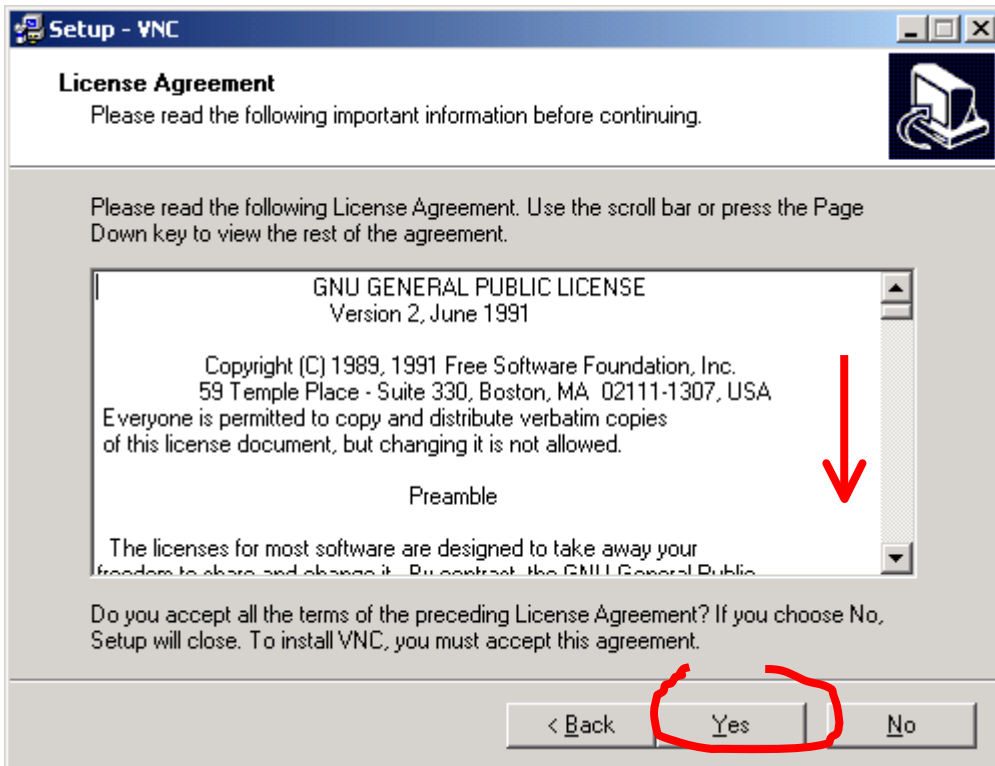
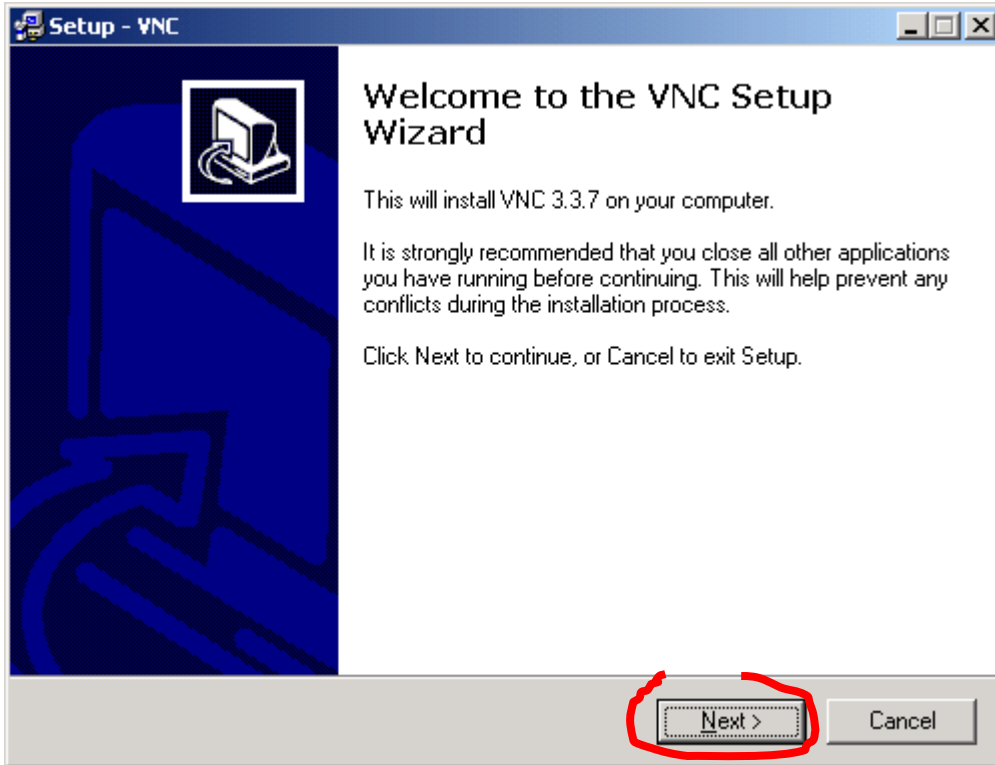
### Installation of WinVNC Server

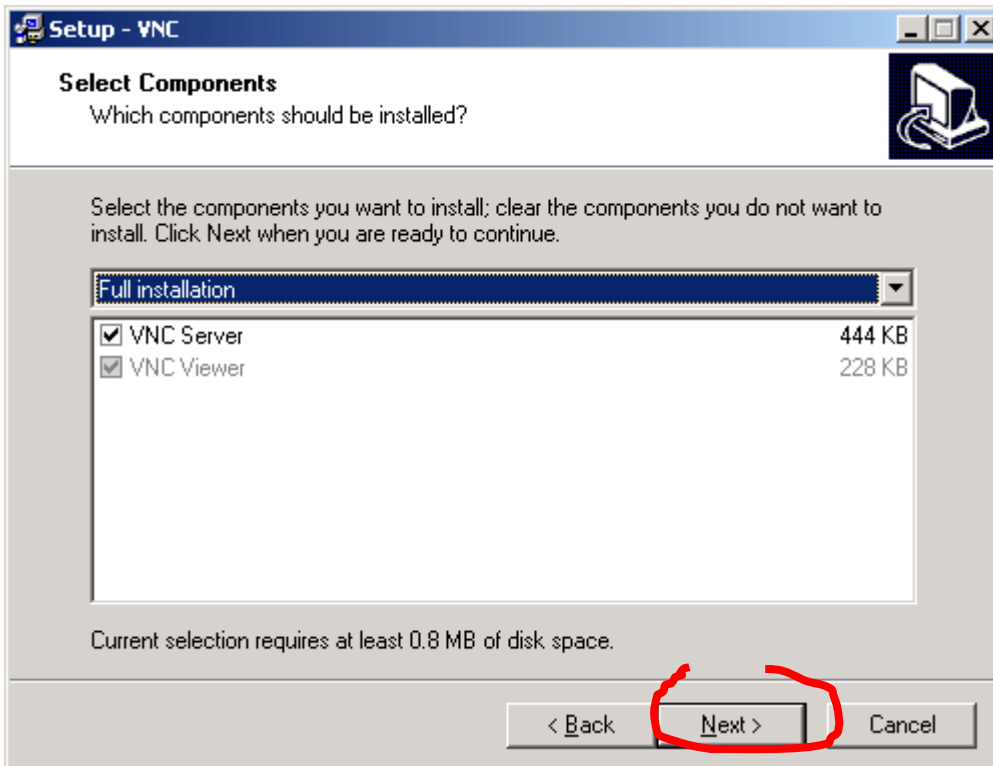
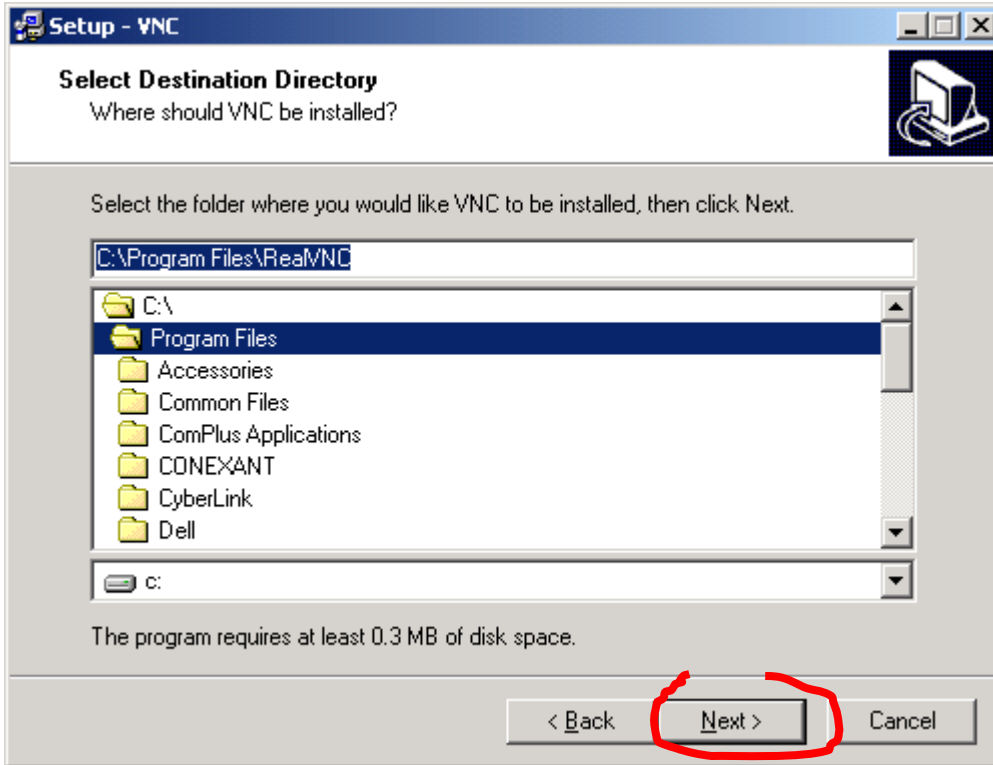
(This software can be downloaded for free from next location:

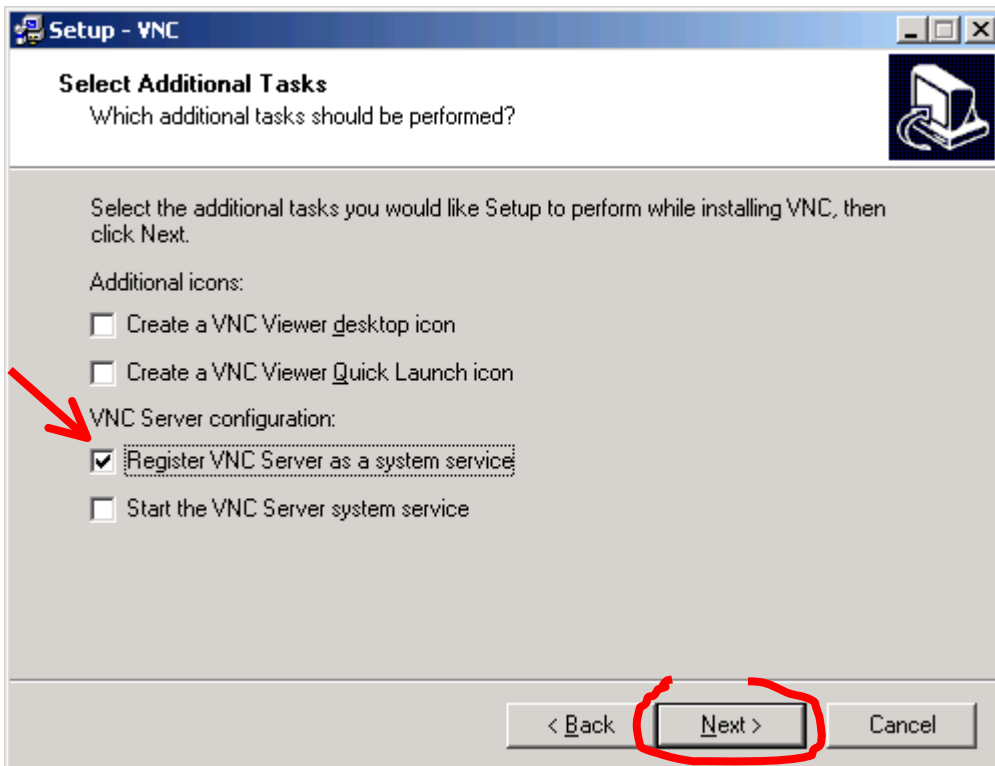
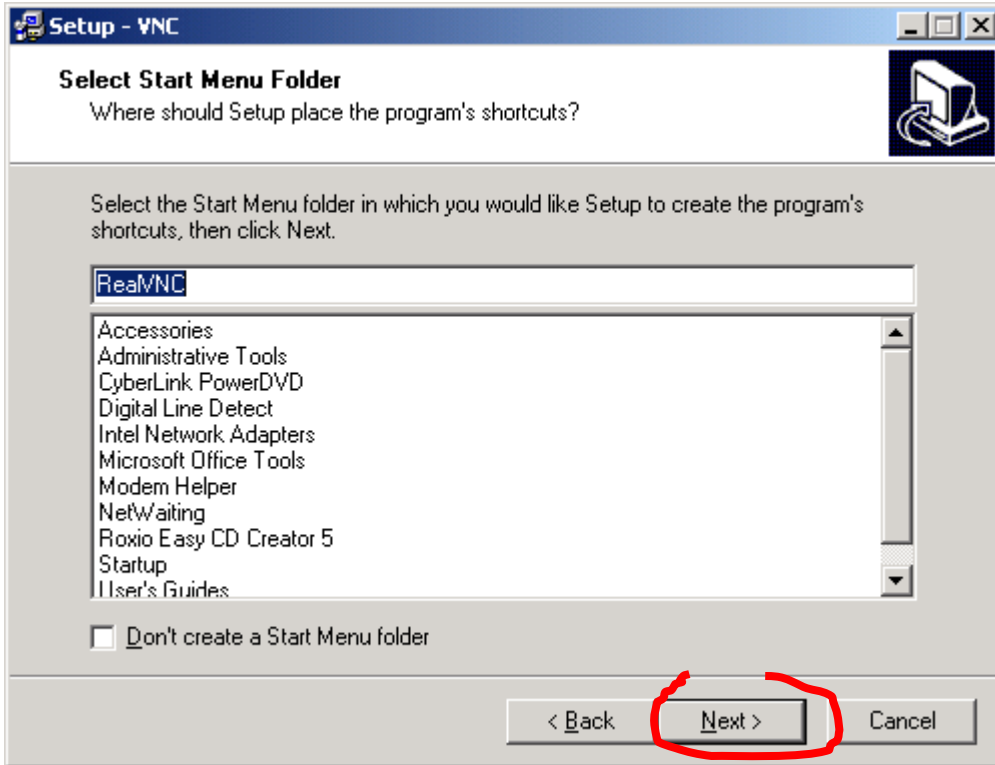
<http://www.realvnc.com> )

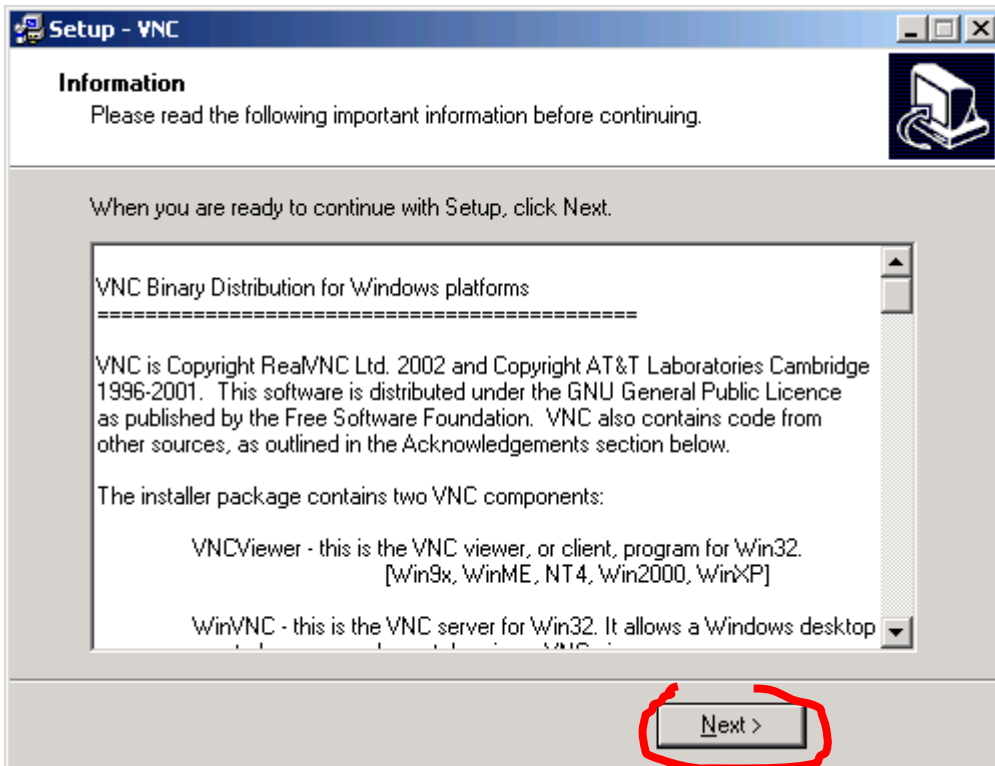
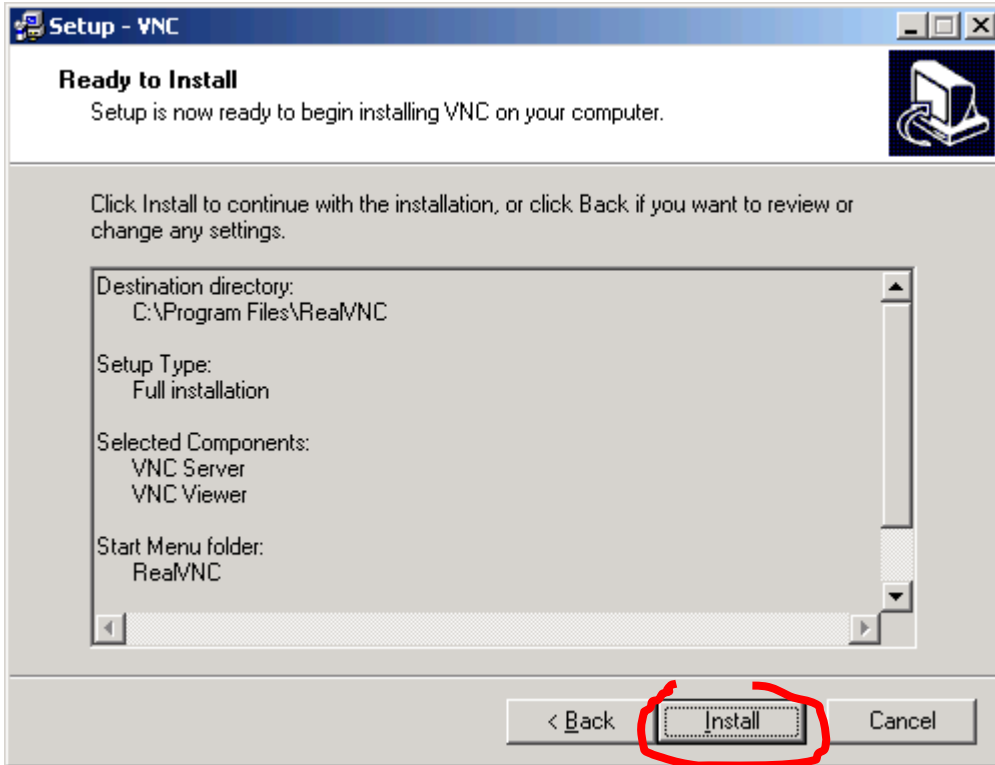
Installation steps:

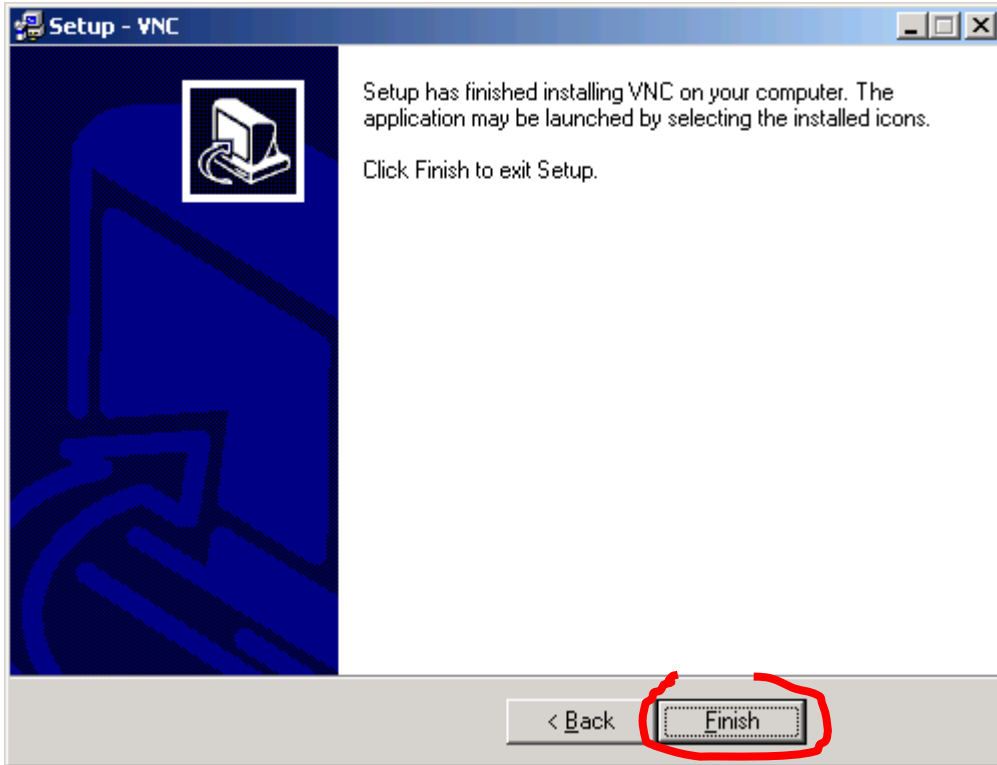




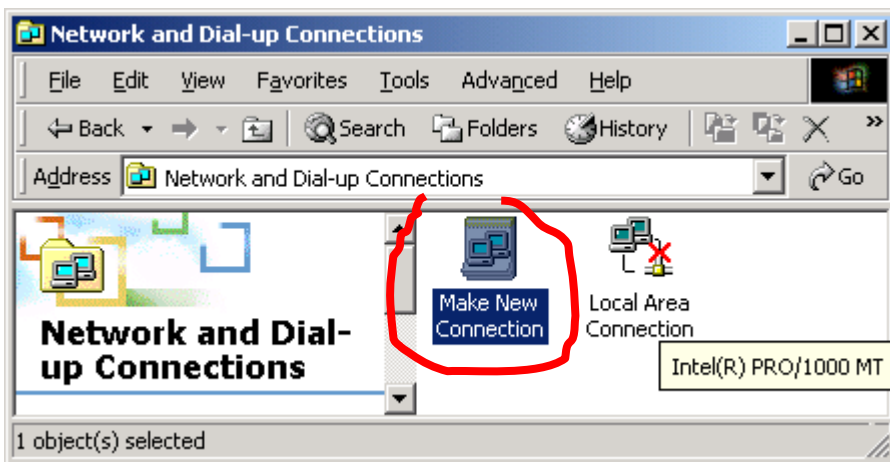
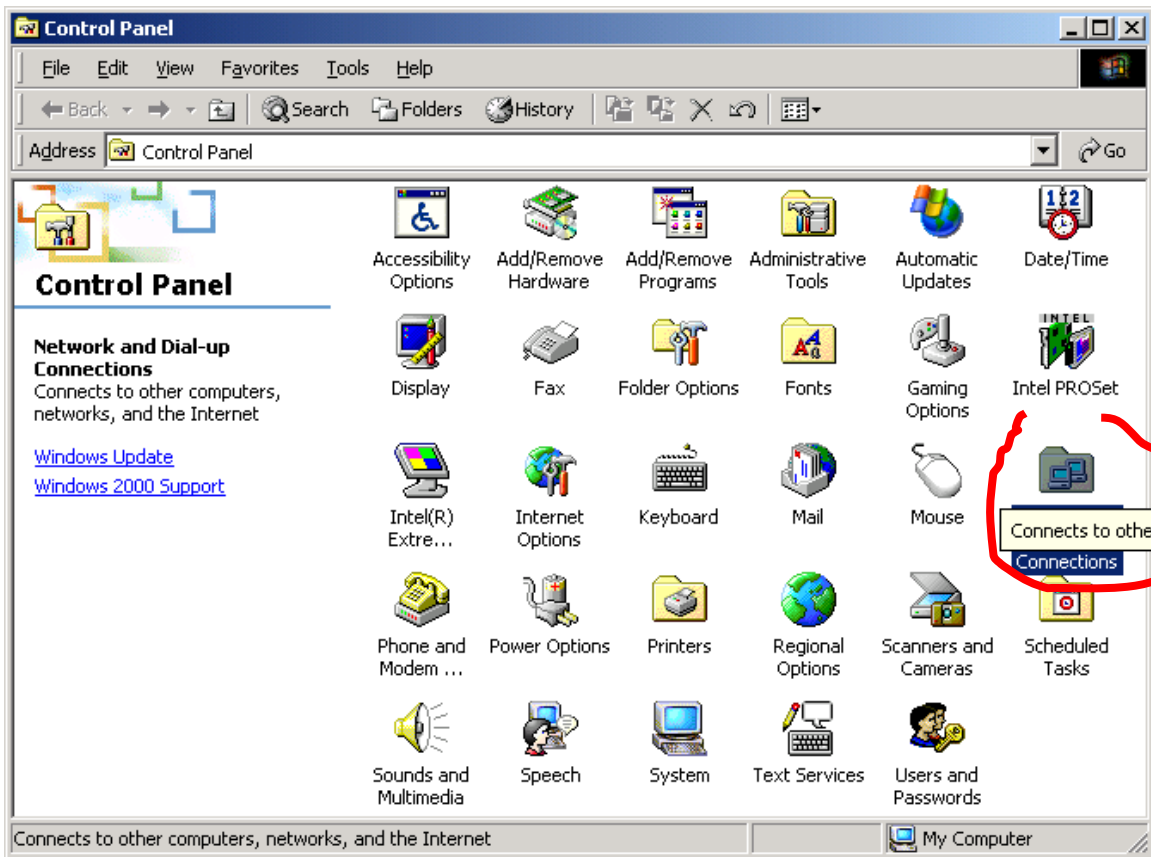








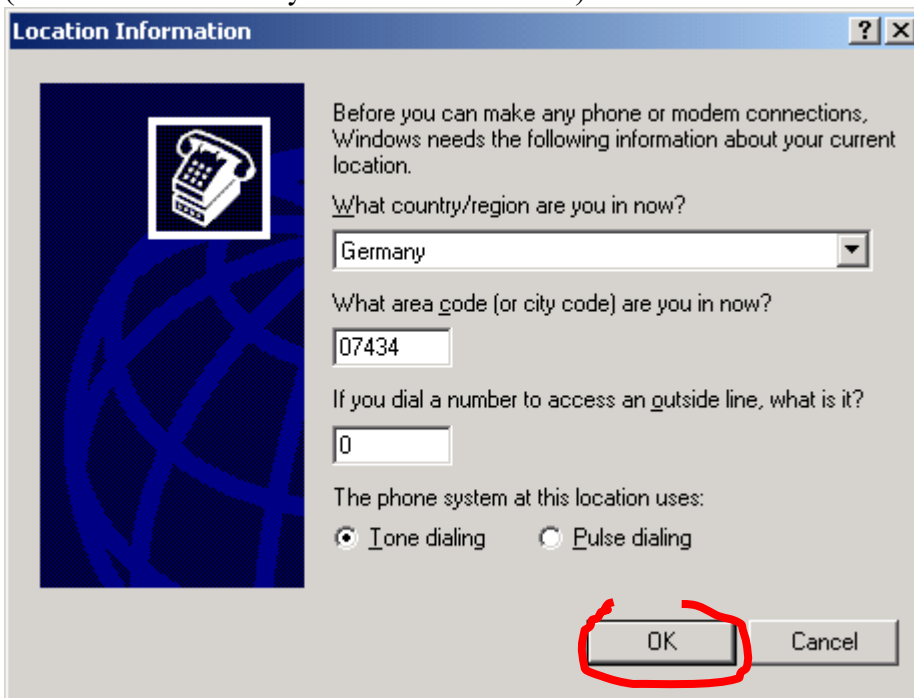
## Making of Connection and its configuration



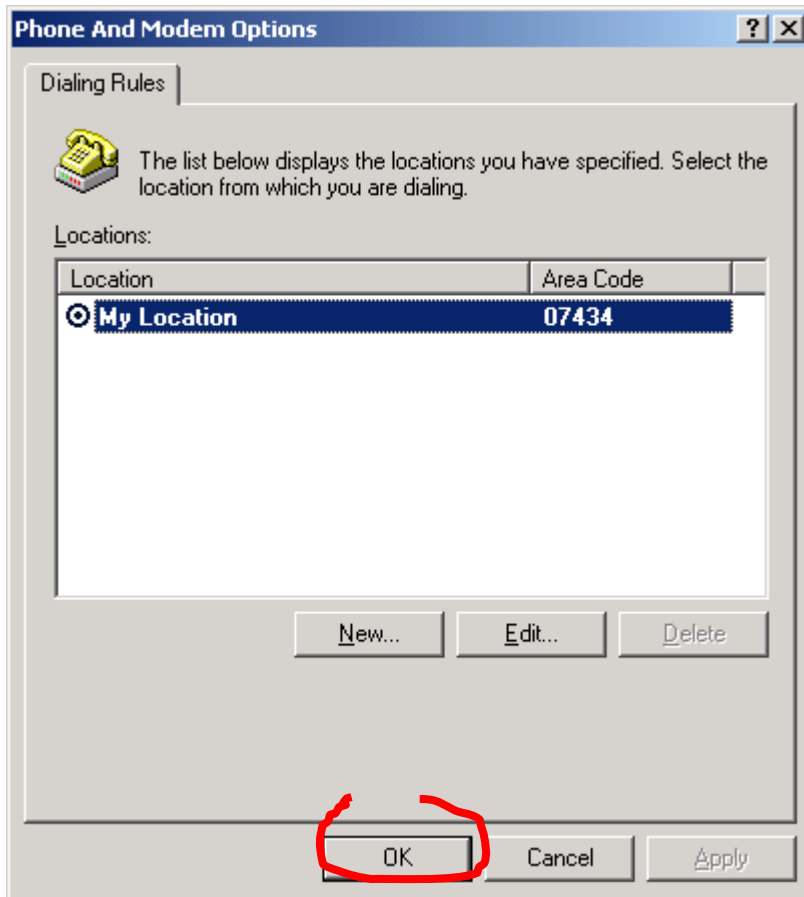
**Note:** This and two next screens will be not appear if this is not first attempt to make new connection.

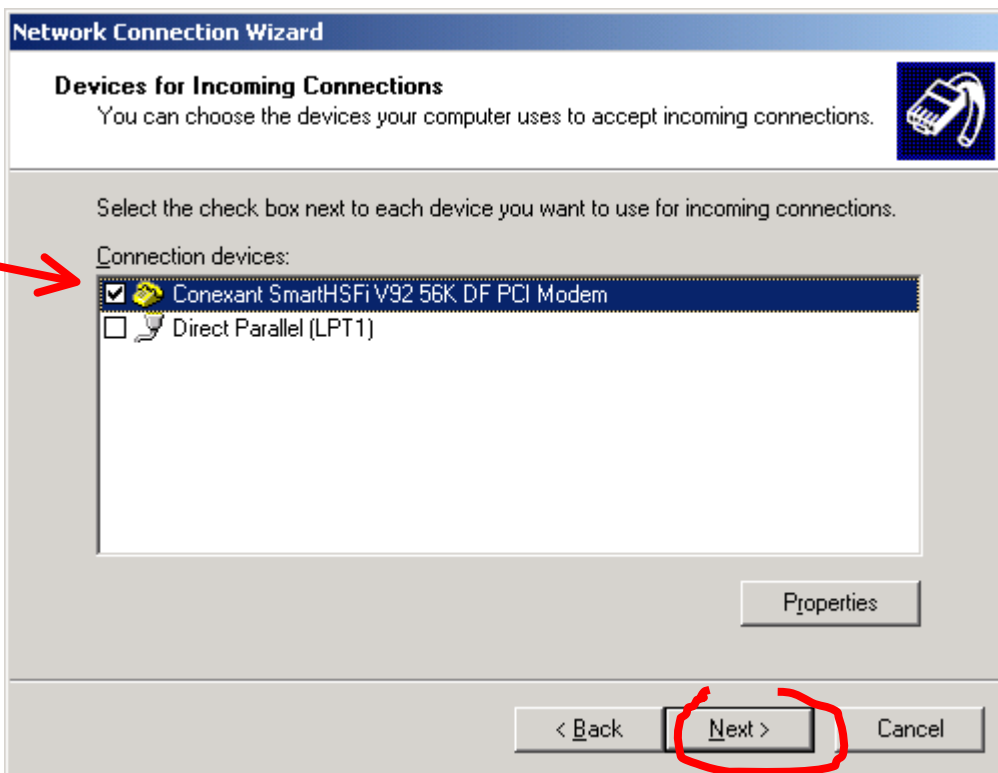
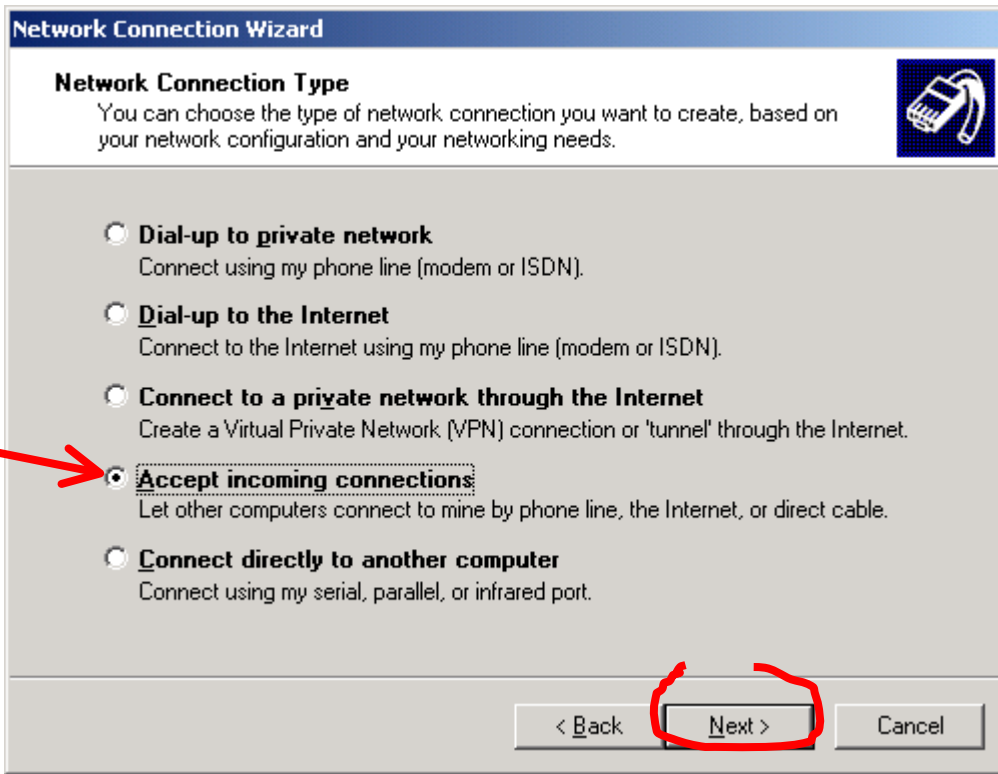


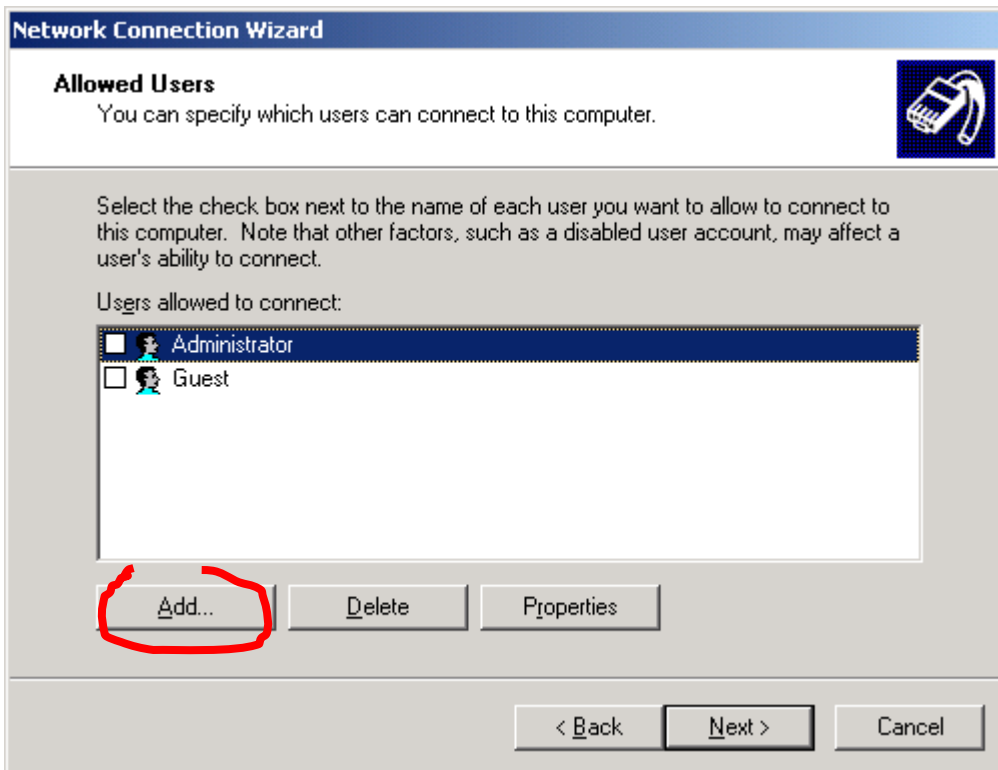
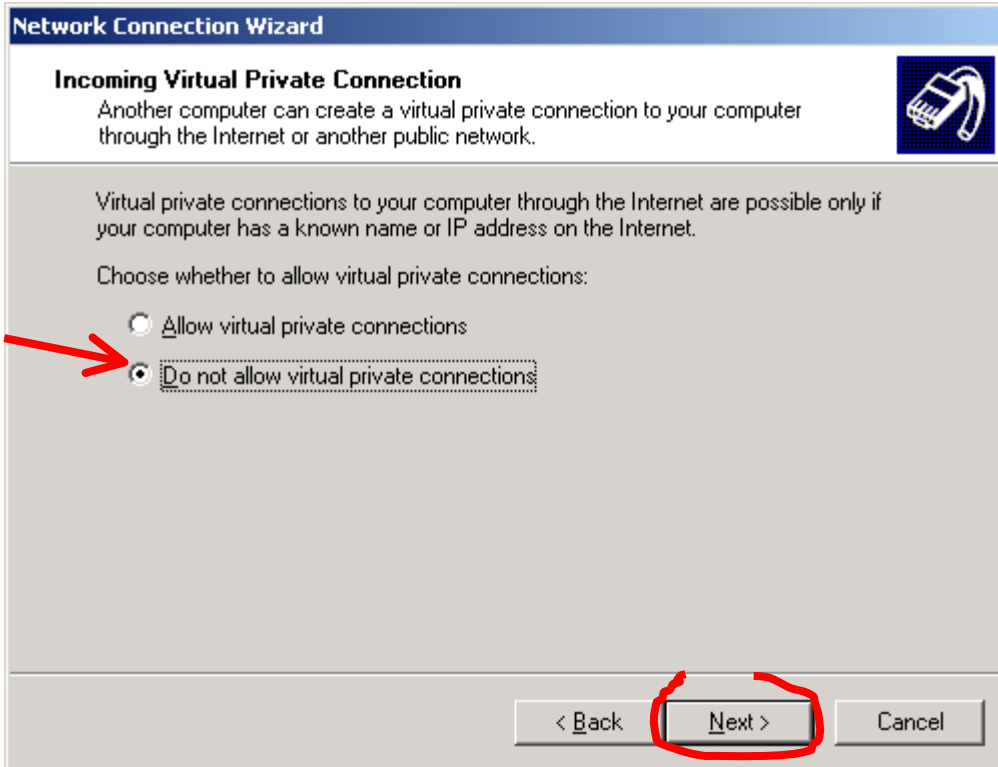
(here should be fill in your local information)

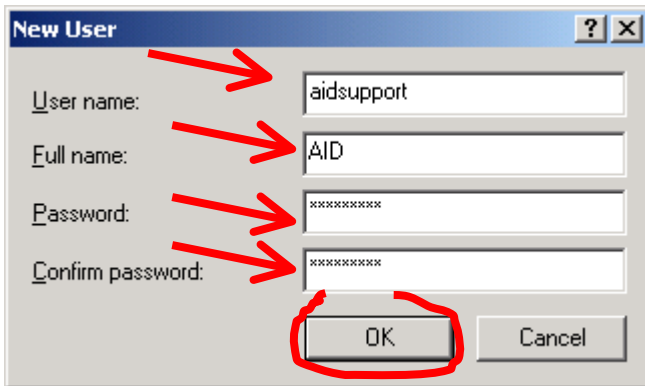




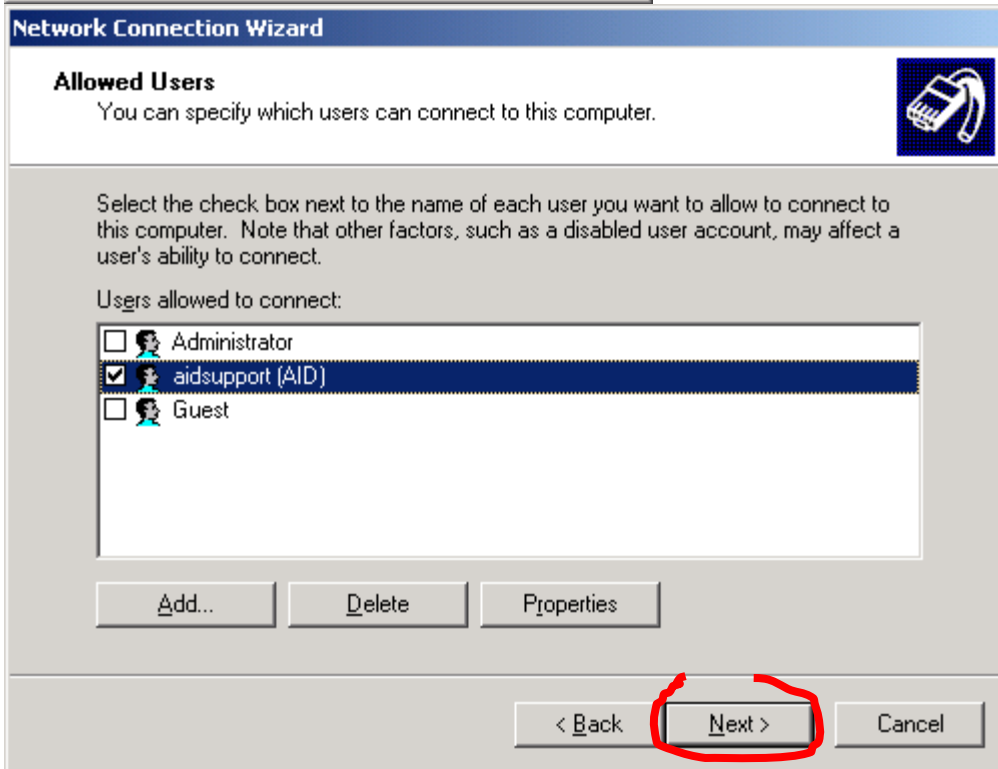




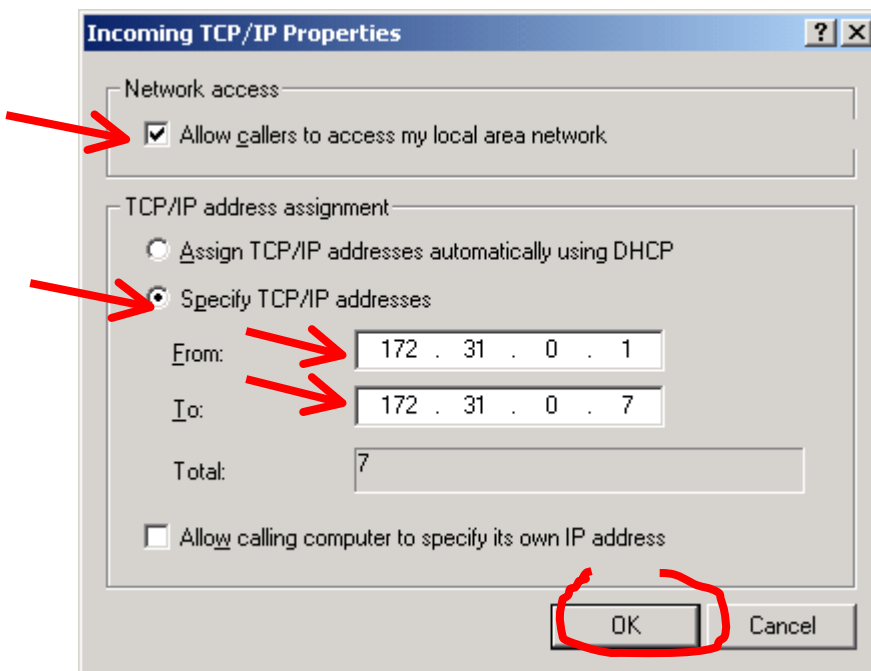
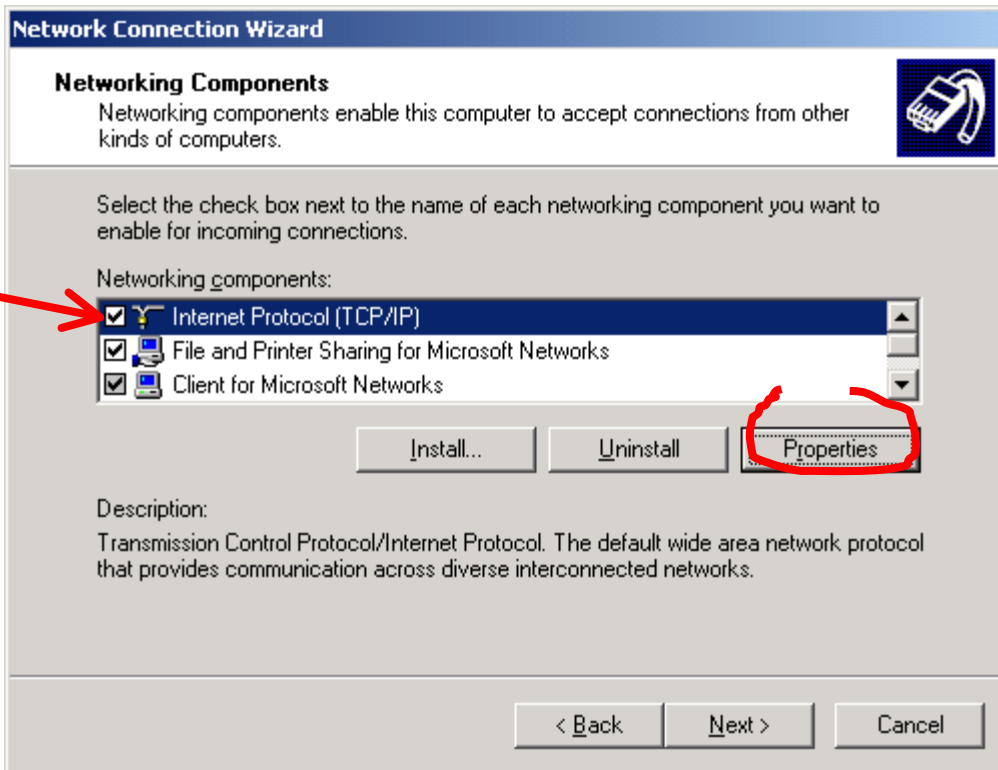


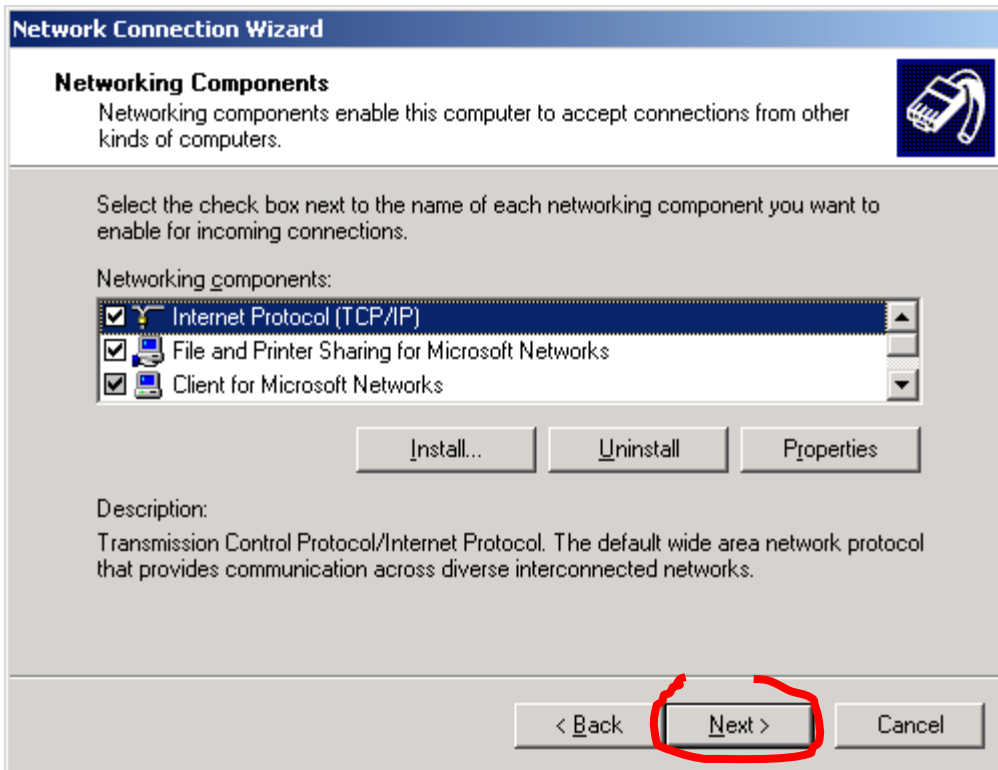


The 'New User' dialog box contains four text input fields: 'User name:' with 'aidsupport', 'Full name:' with 'AID', 'Password:' with '\*\*\*\*\*', and 'Confirm password:' with '\*\*\*\*\*'. Red arrows point to each of these fields. At the bottom, the 'OK' button is circled in red.

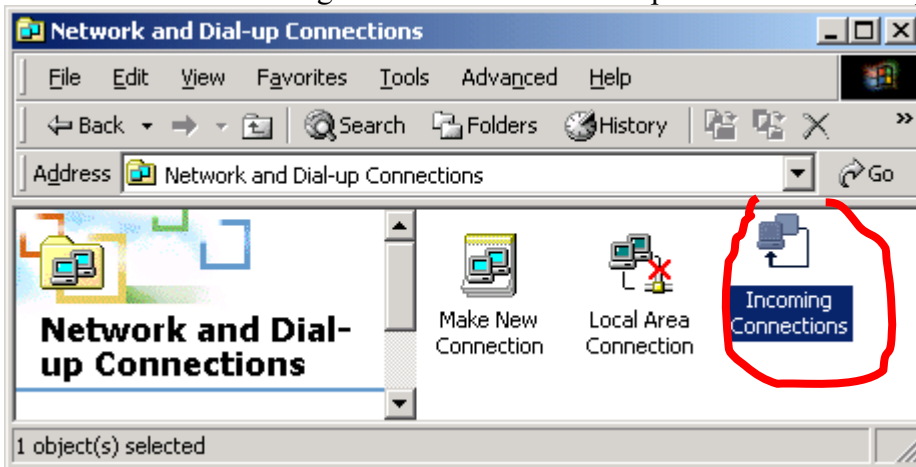


The 'Network Connection Wizard' window shows the 'Allowed Users' section. It includes a list of users with checkboxes: 'Administrator' (unchecked), 'aidsupport (AID)' (checked), and 'Guest' (unchecked). The 'aidsupport (AID)' entry is highlighted. Below the list are buttons for 'Add...', 'Delete', and 'Properties'. At the bottom, the '< Back' and 'Next >' buttons are circled in red.

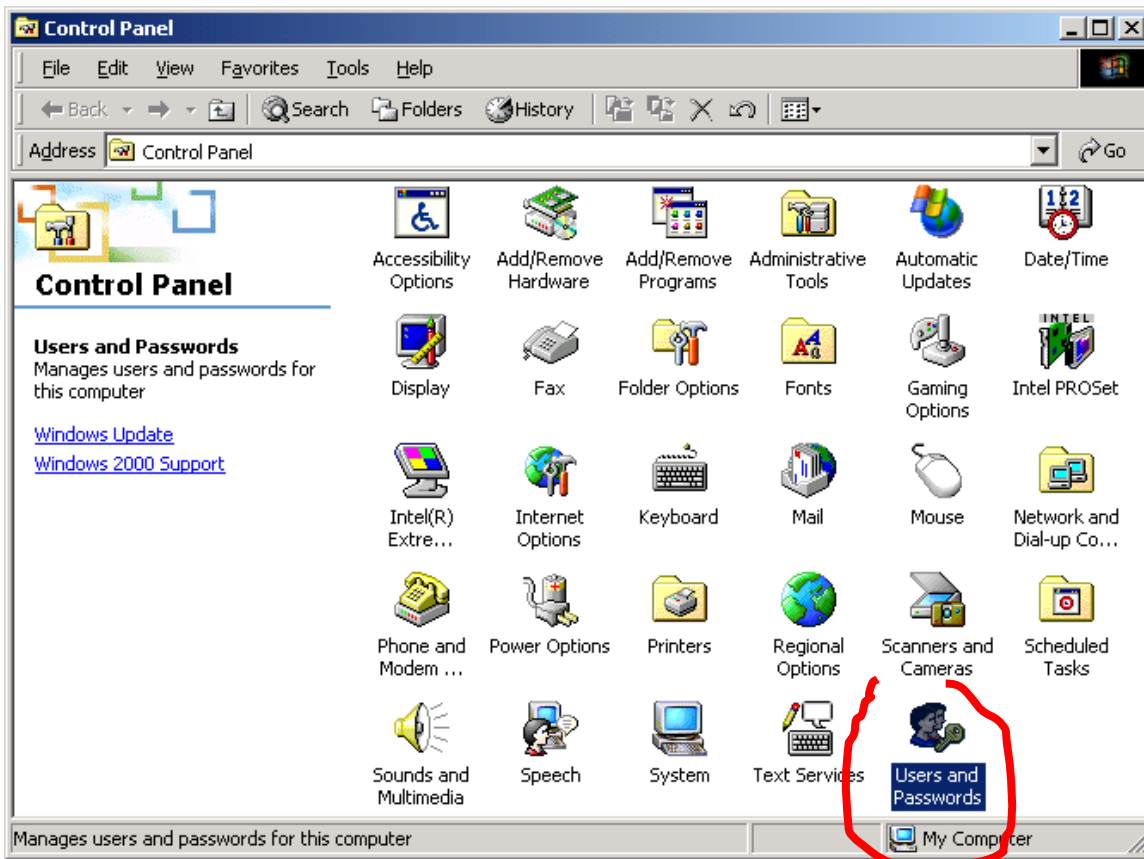




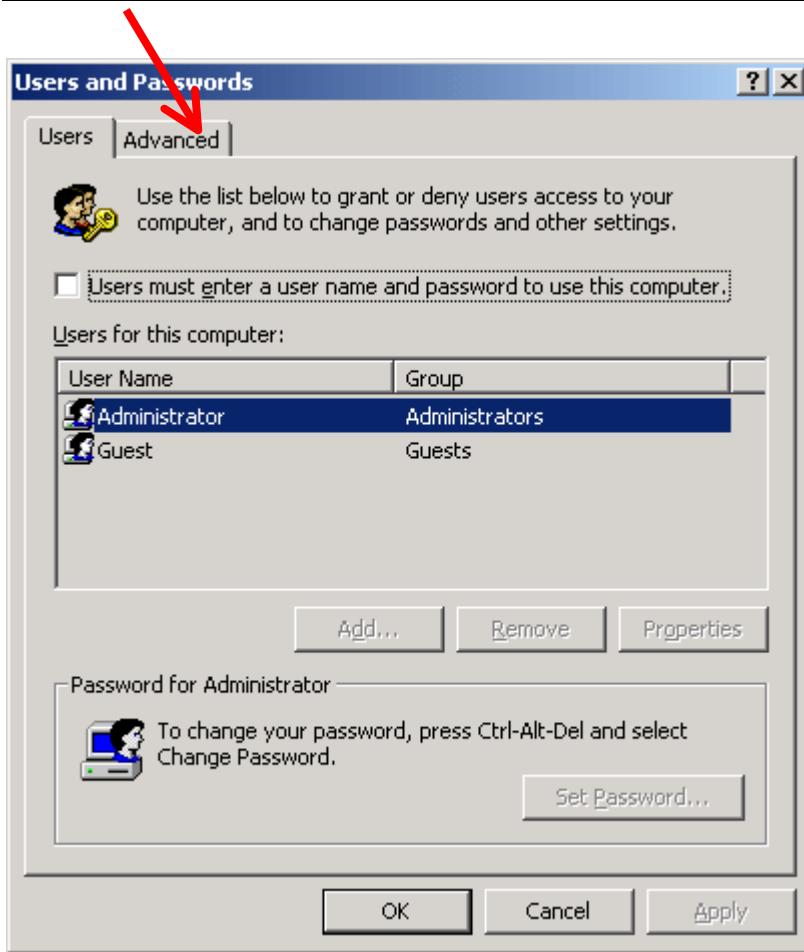
After successful finishing in “Network and Dial-up Connections” will present new icon.

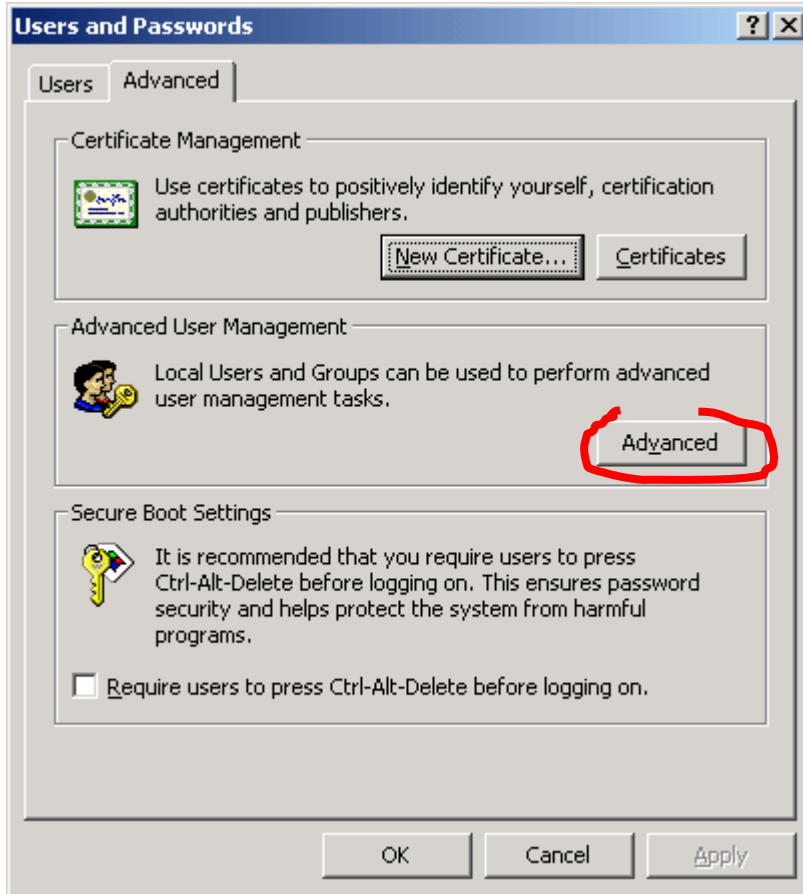


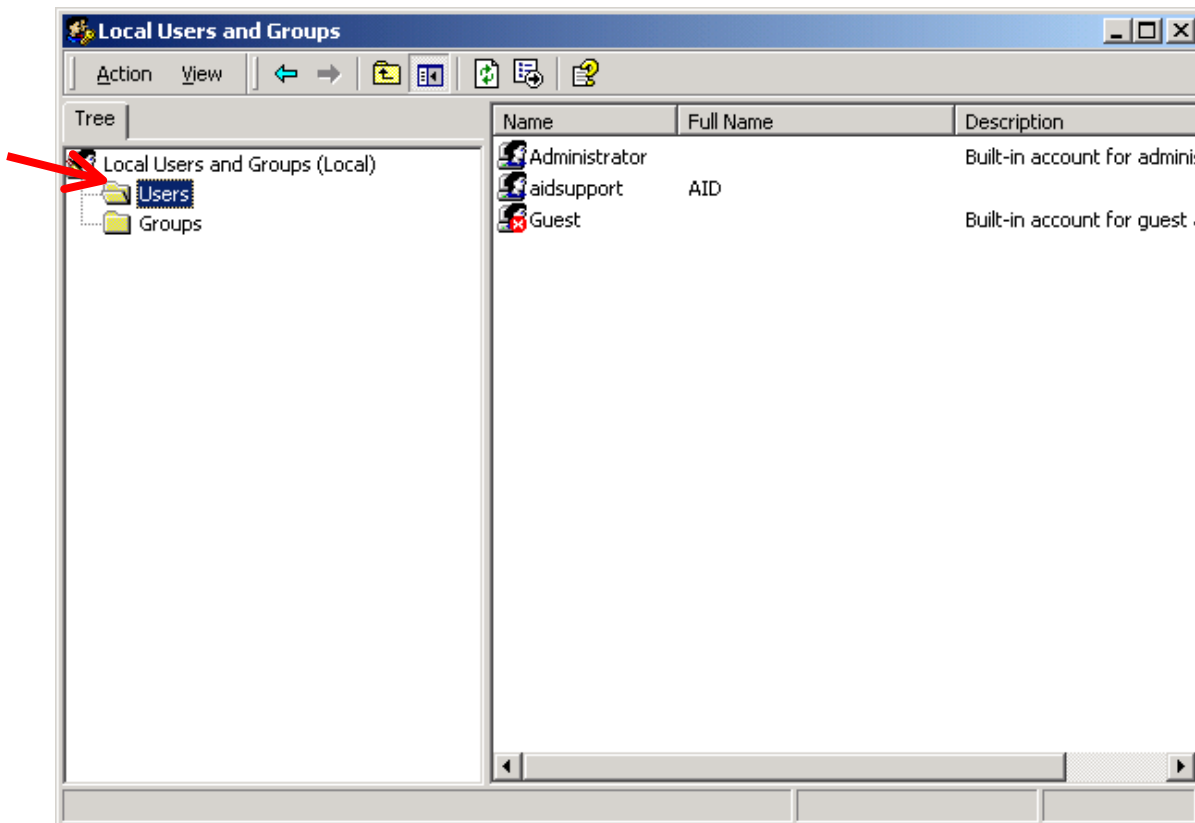
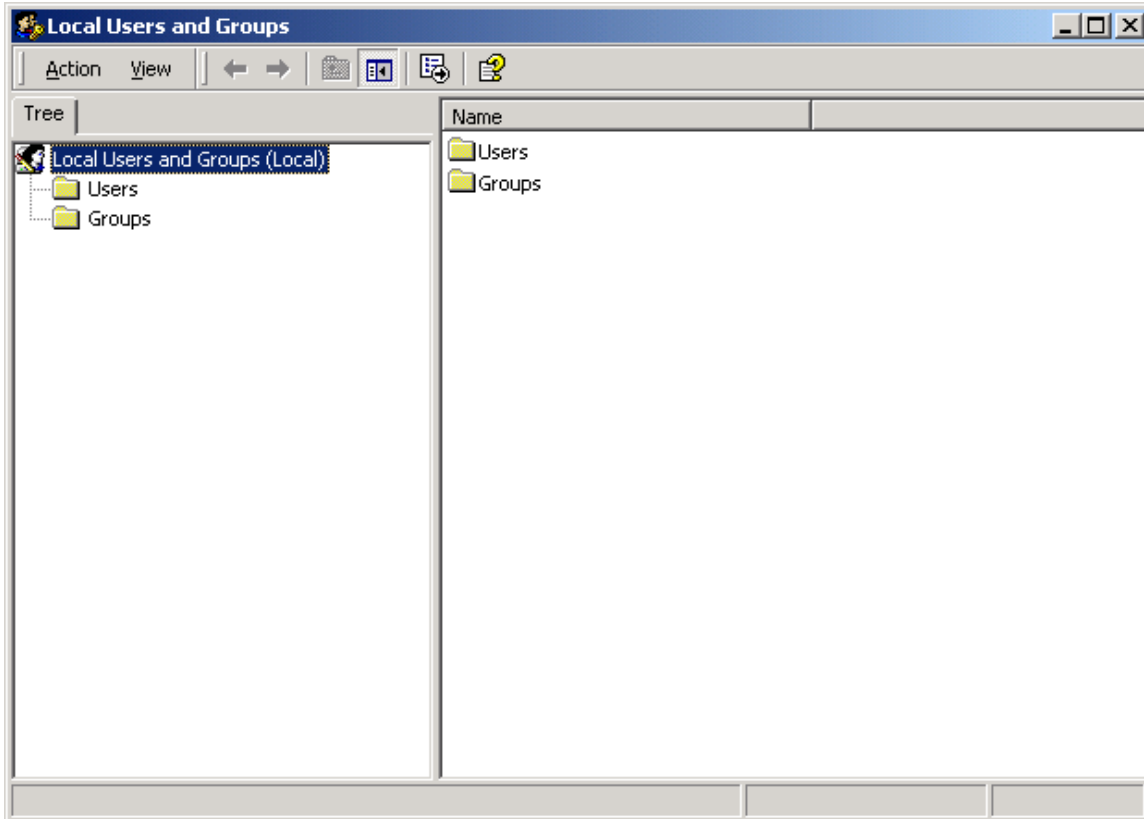
### **Making of administrator privileges for “aidsupport” user.**

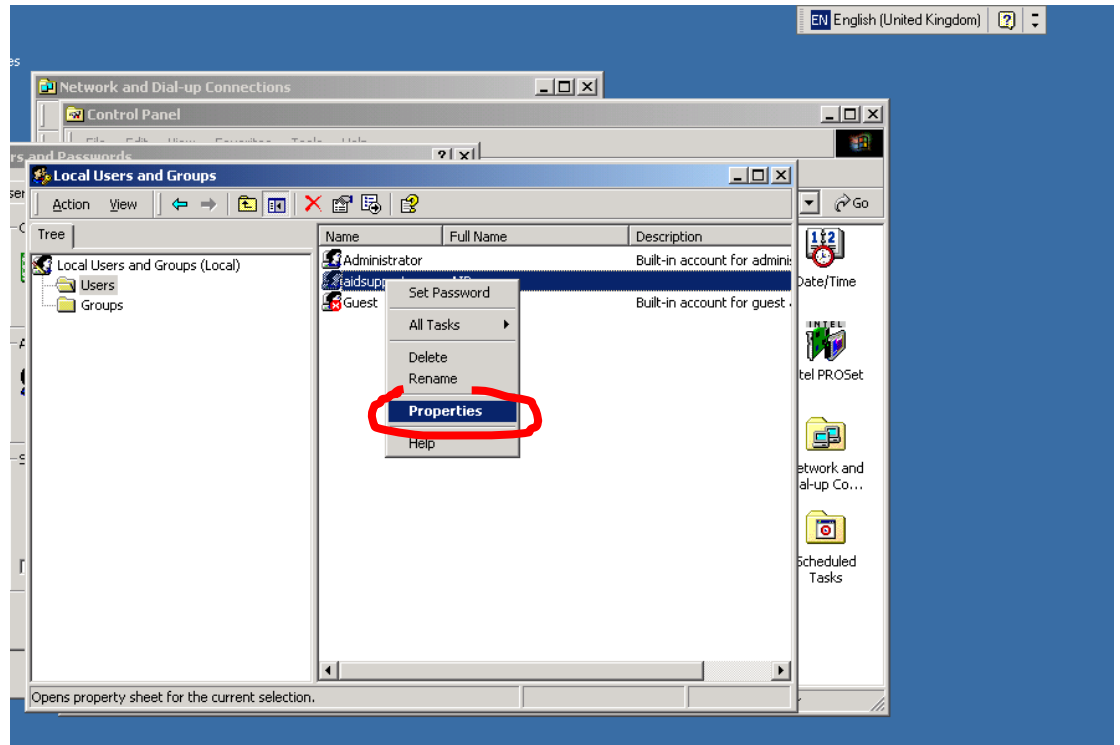


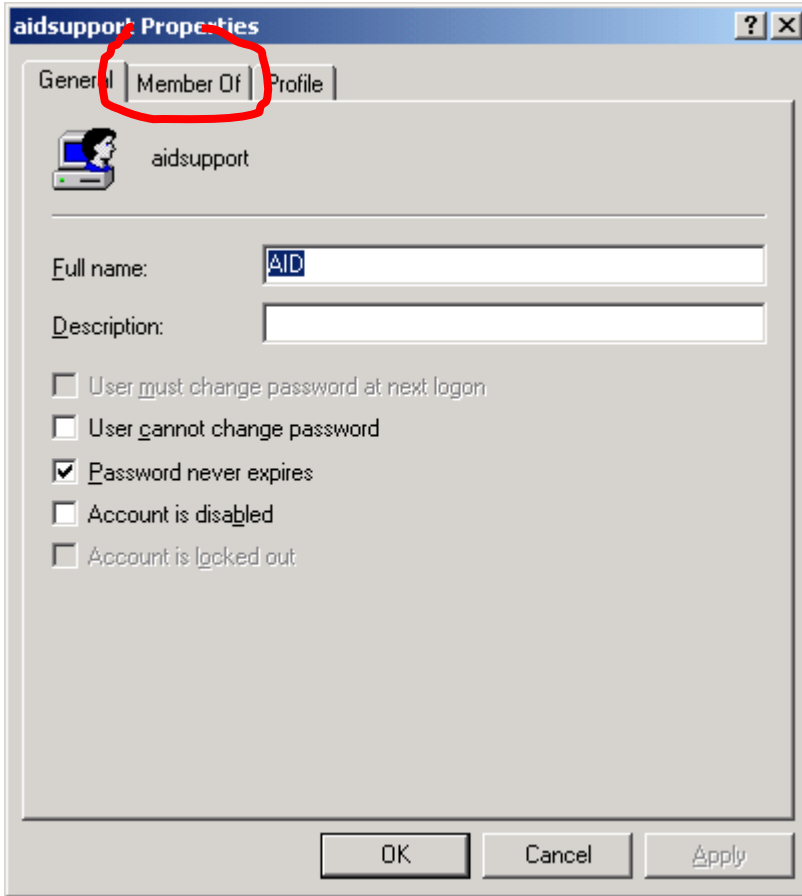


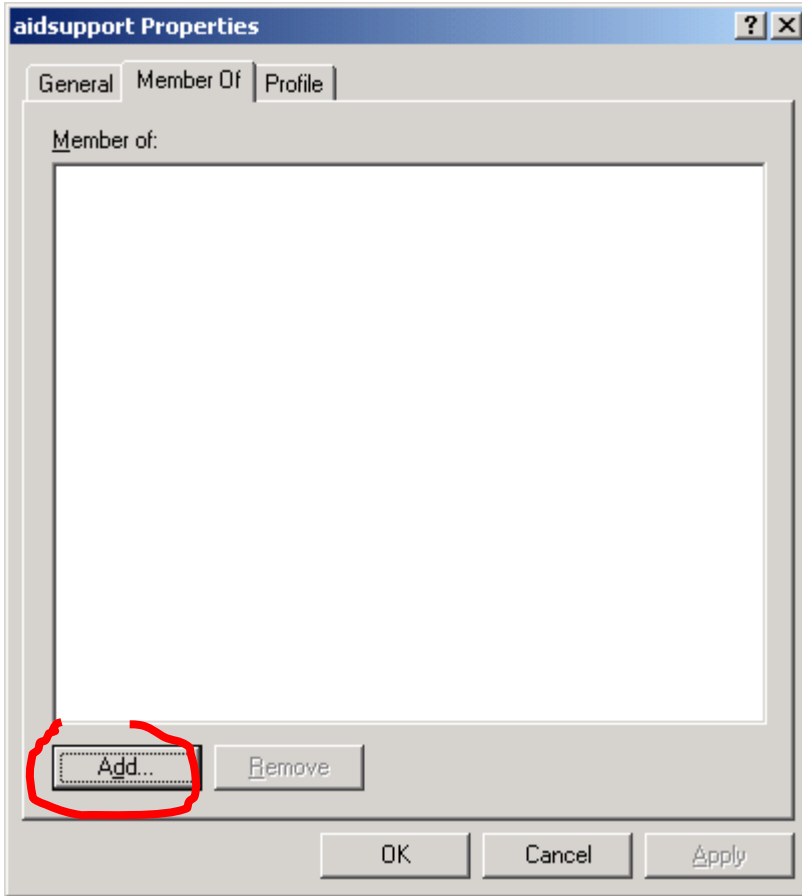


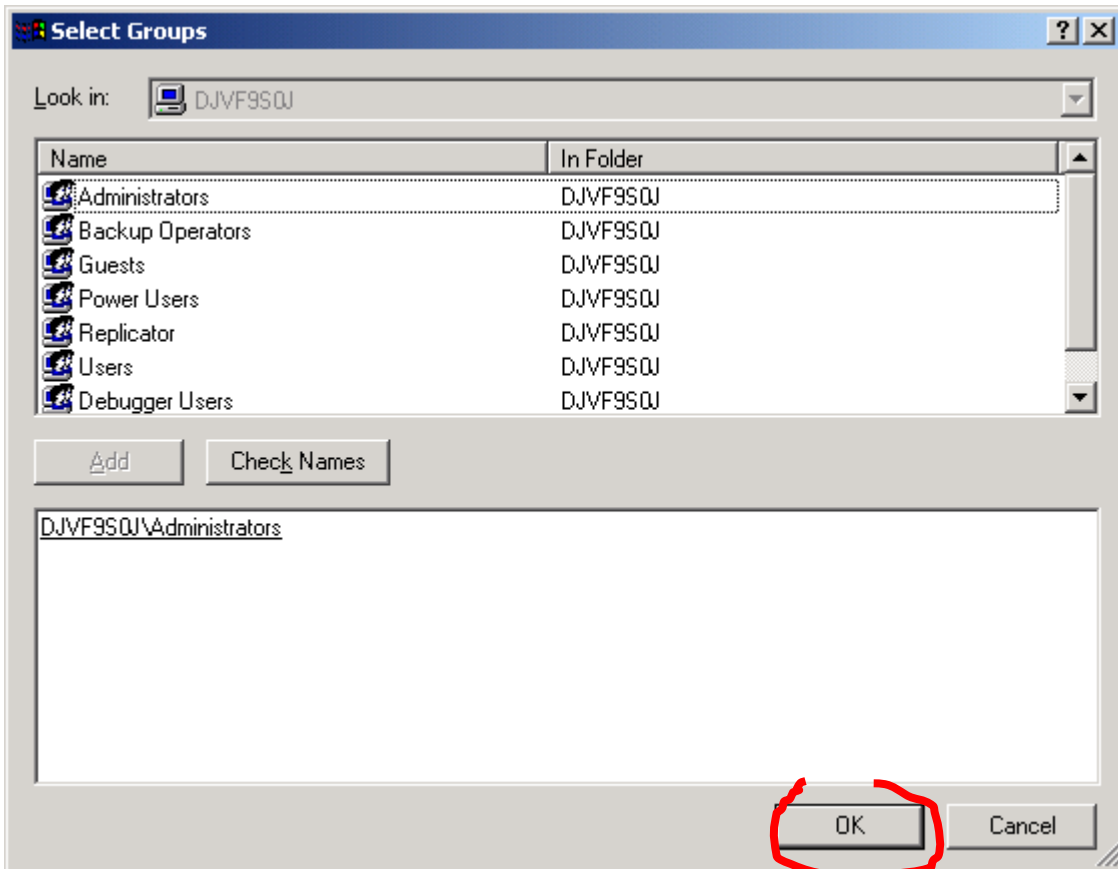
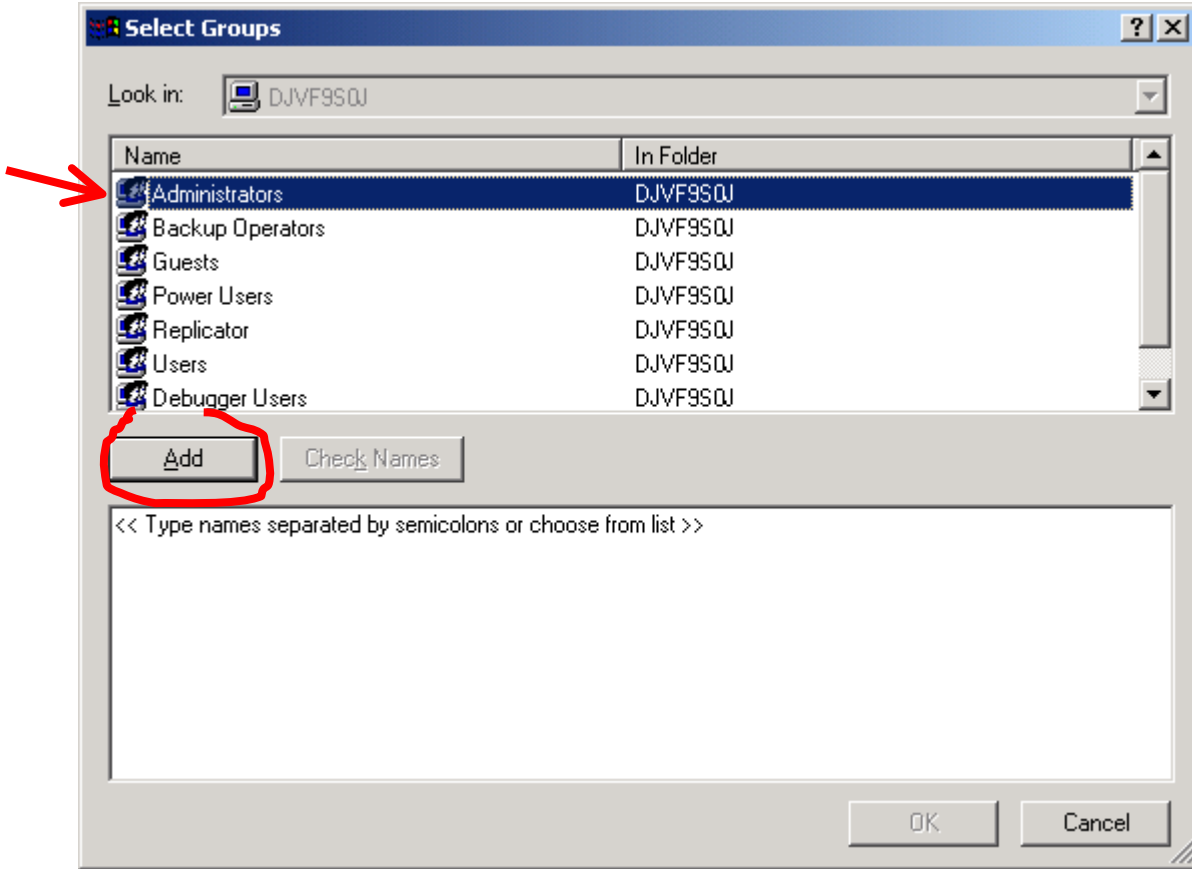


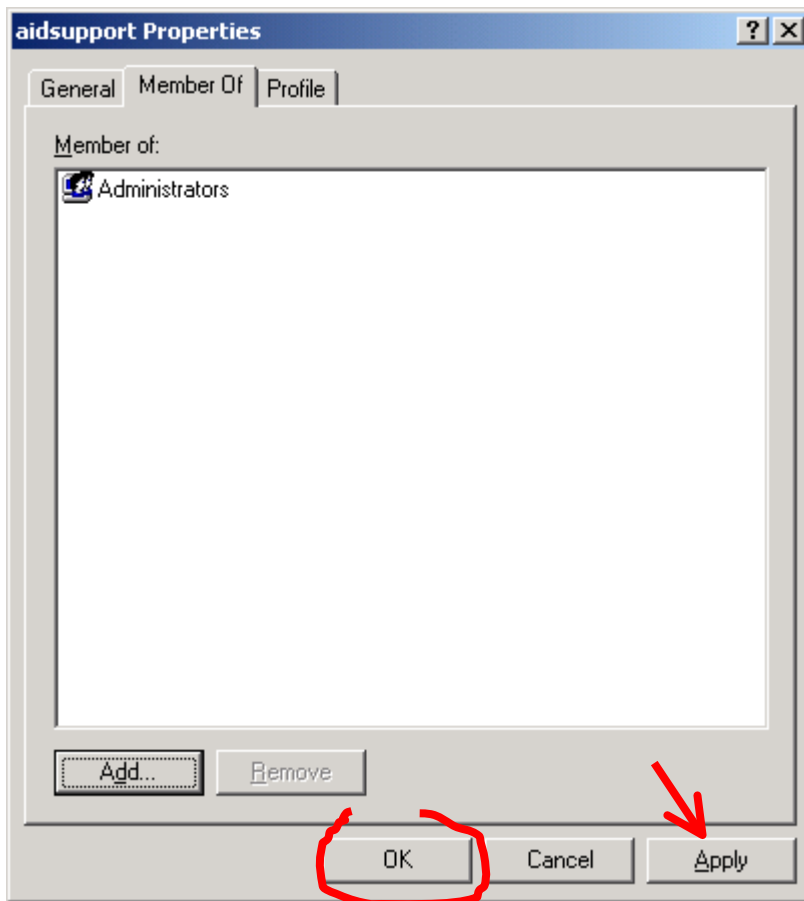




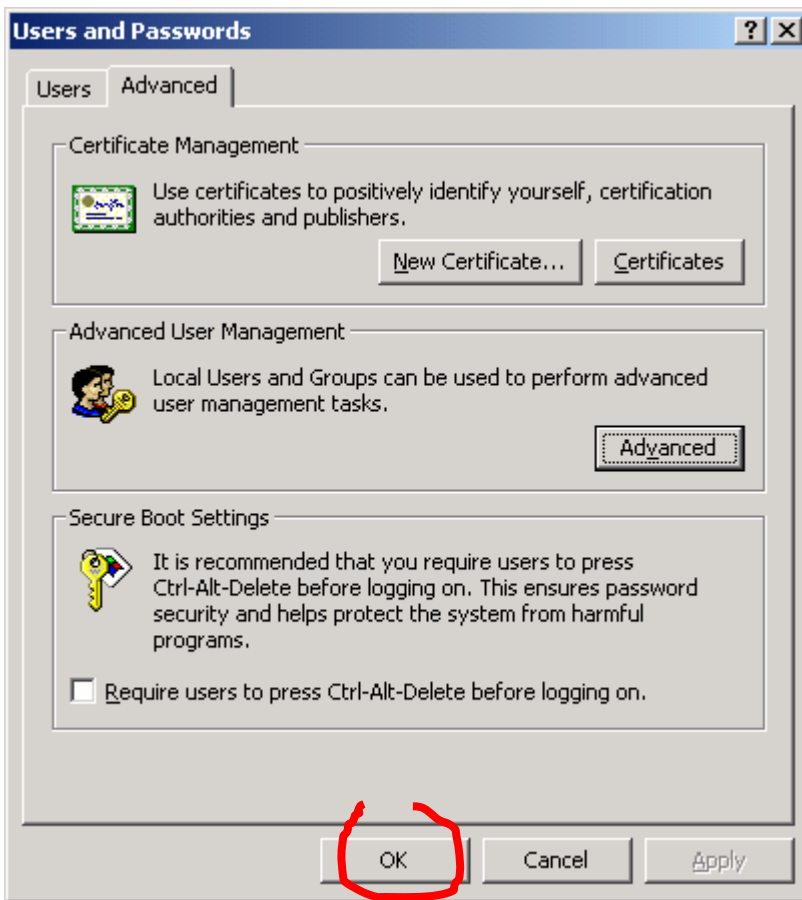
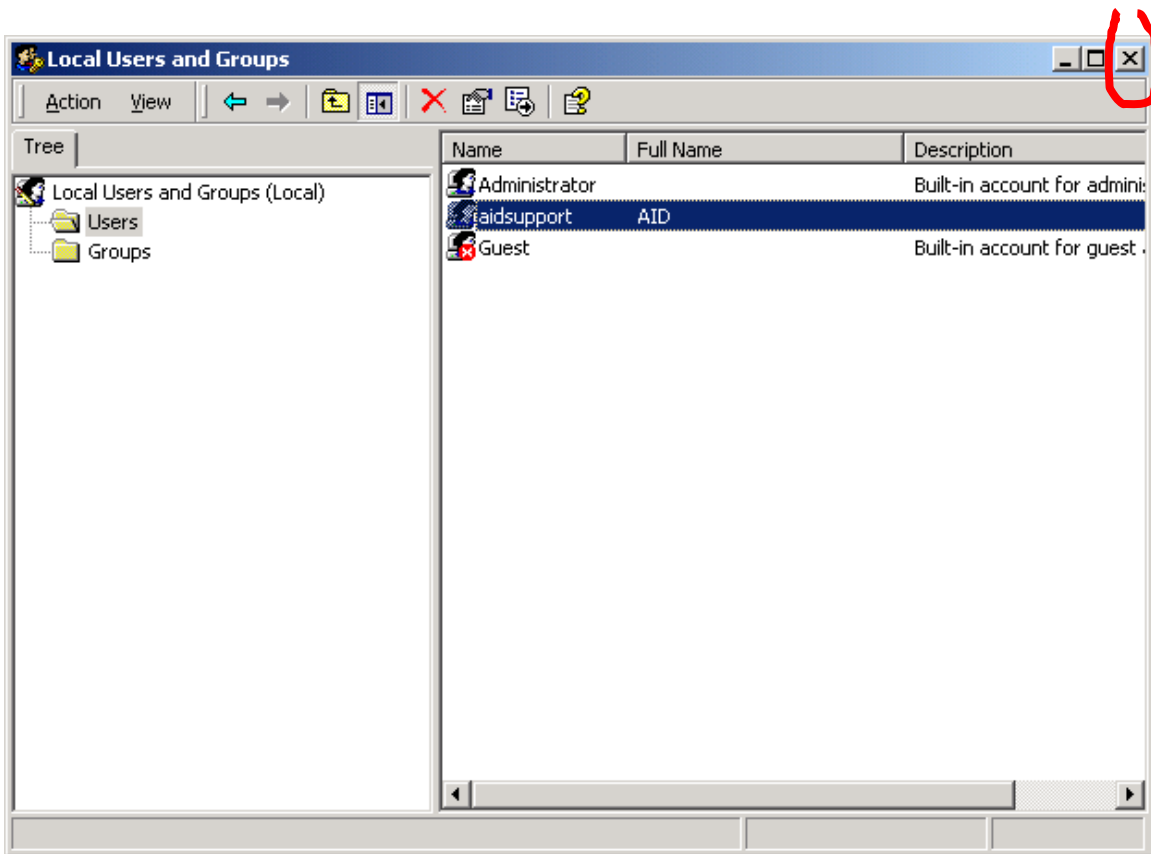








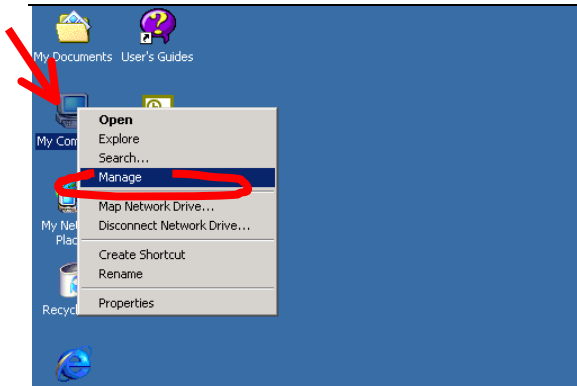


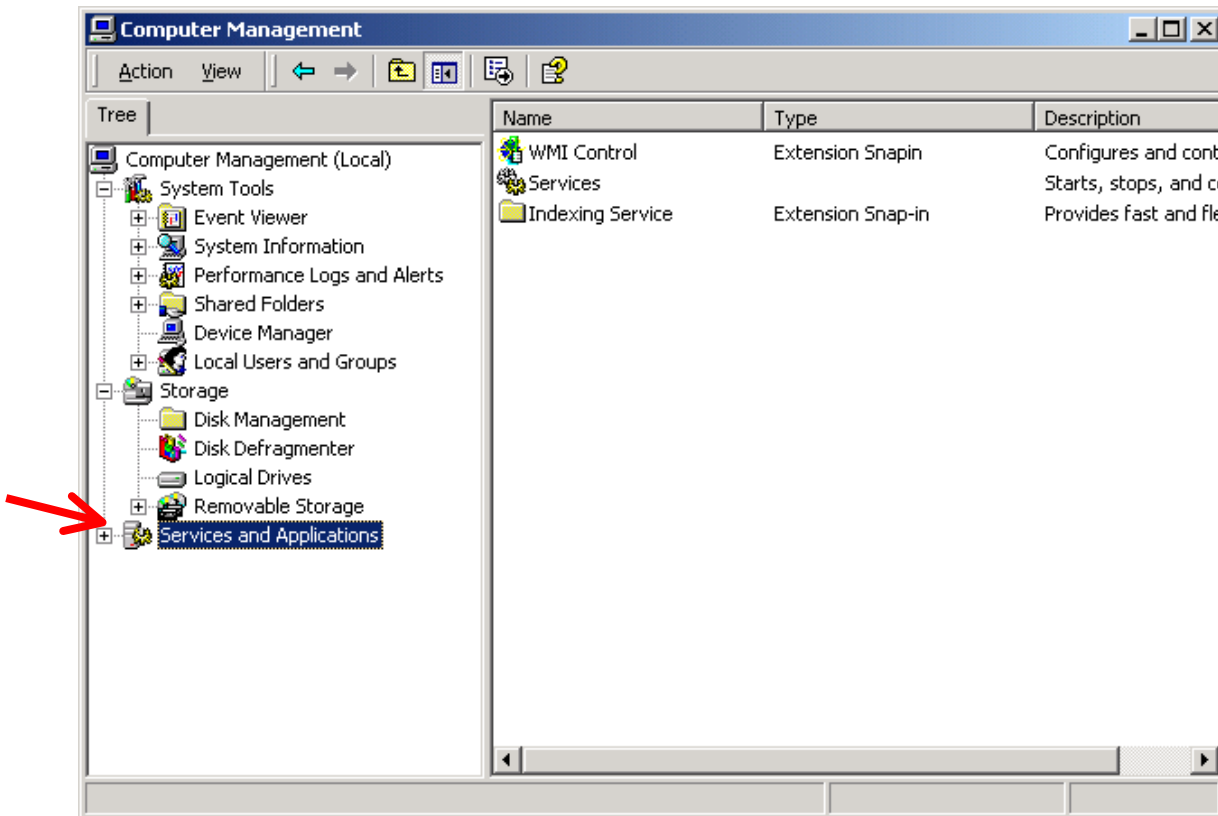
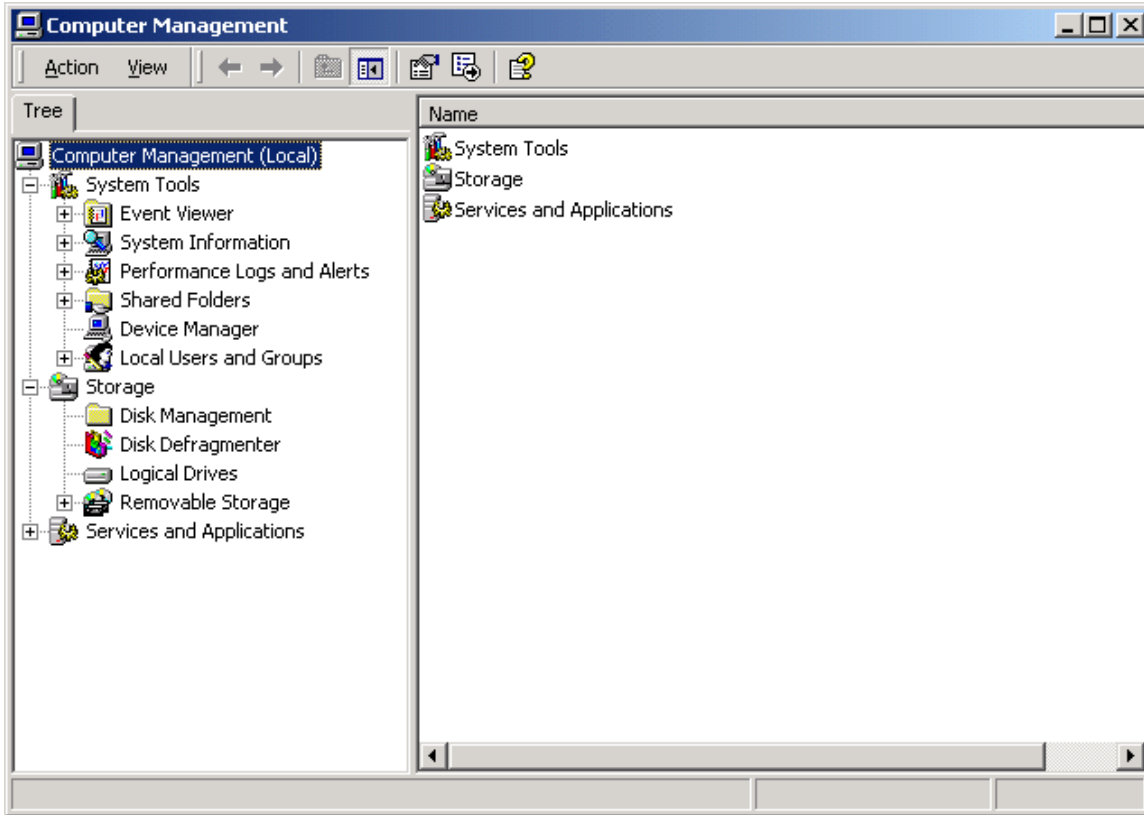


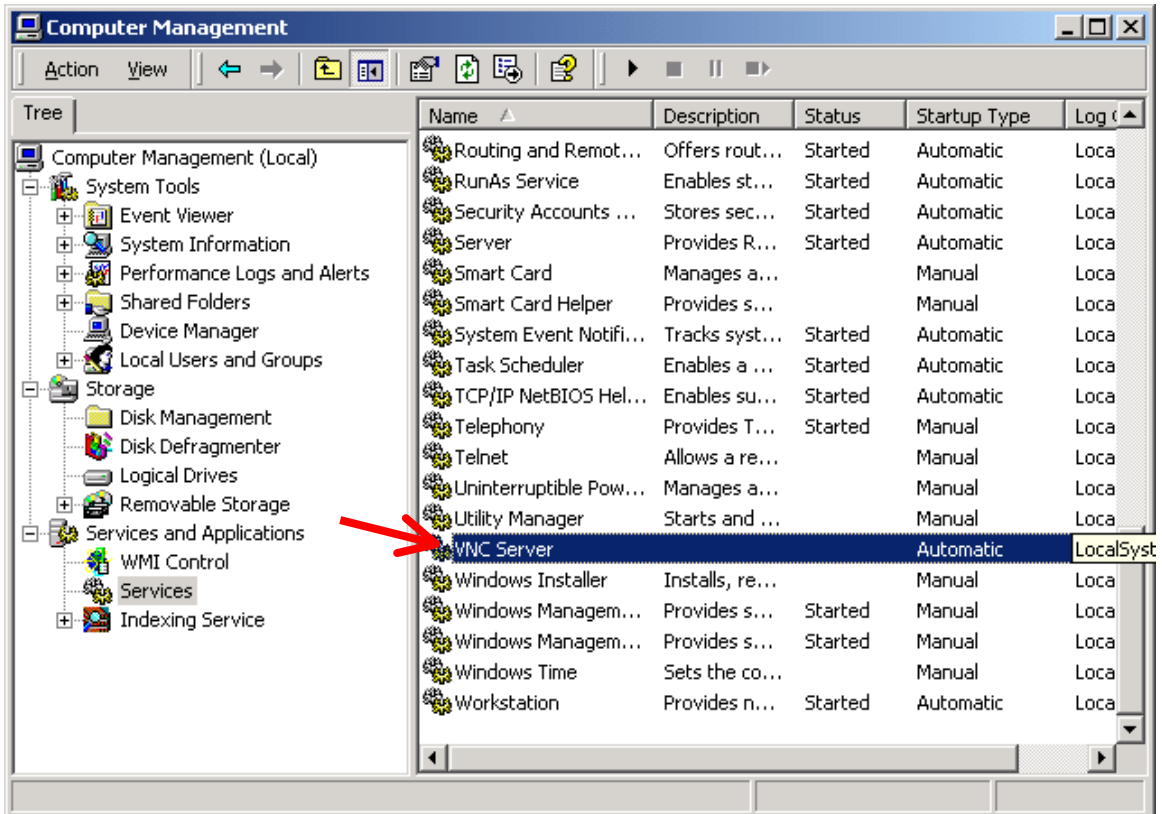
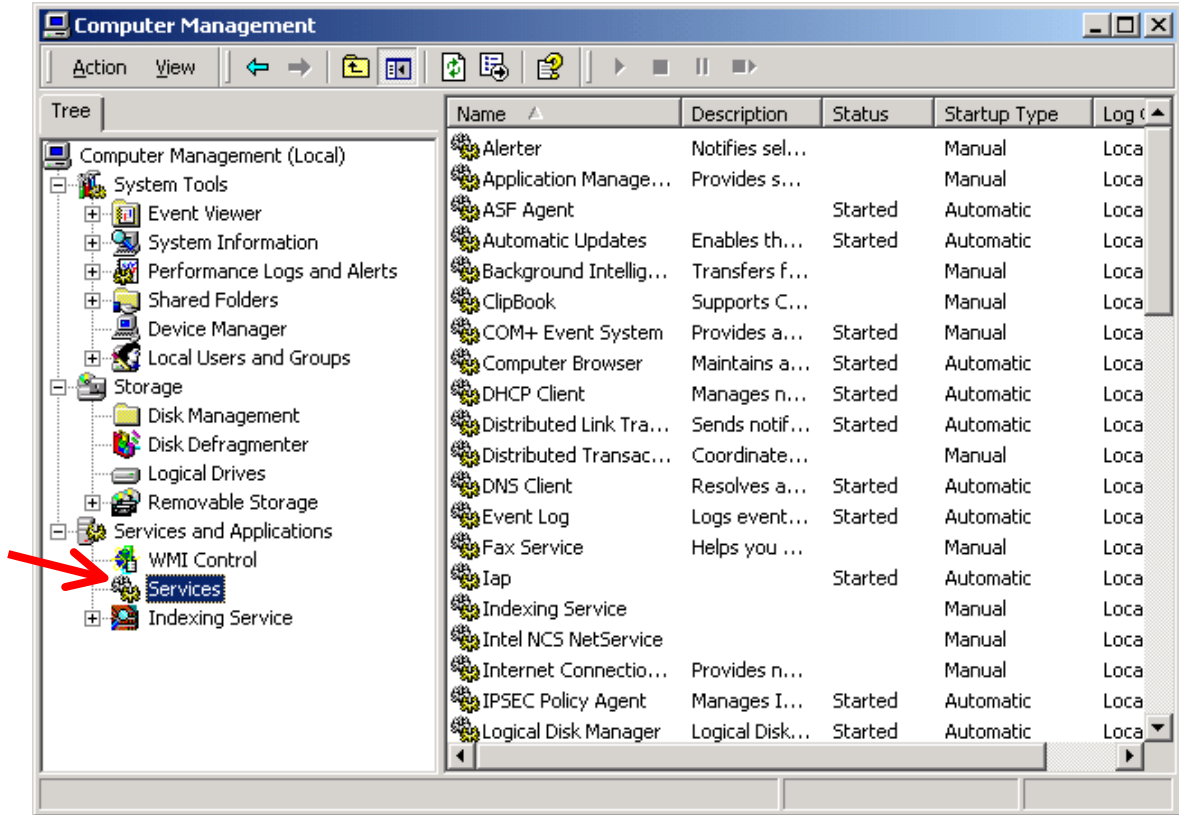
---

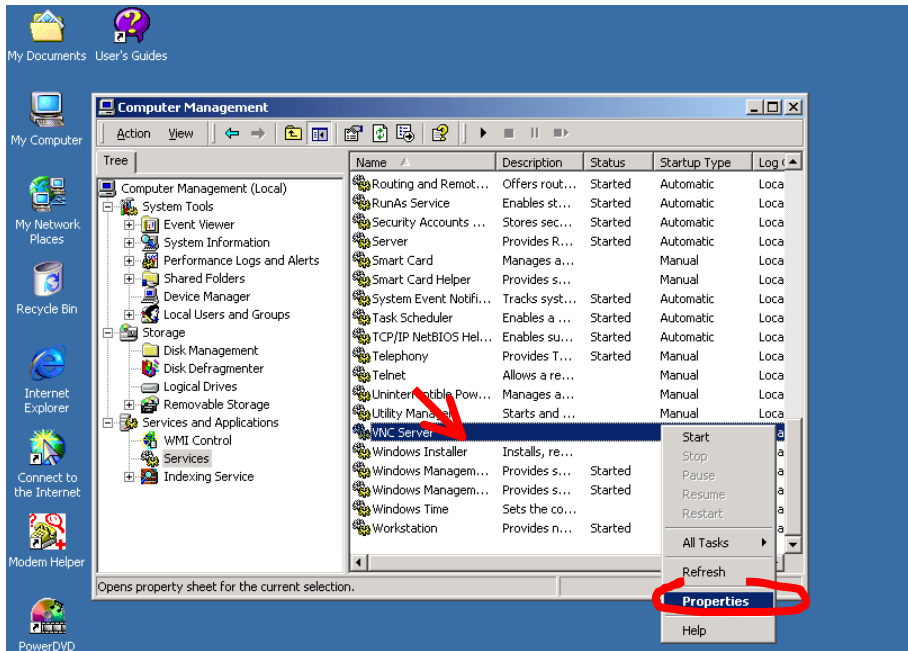
## **Making of Manual Mode for VNC server service**

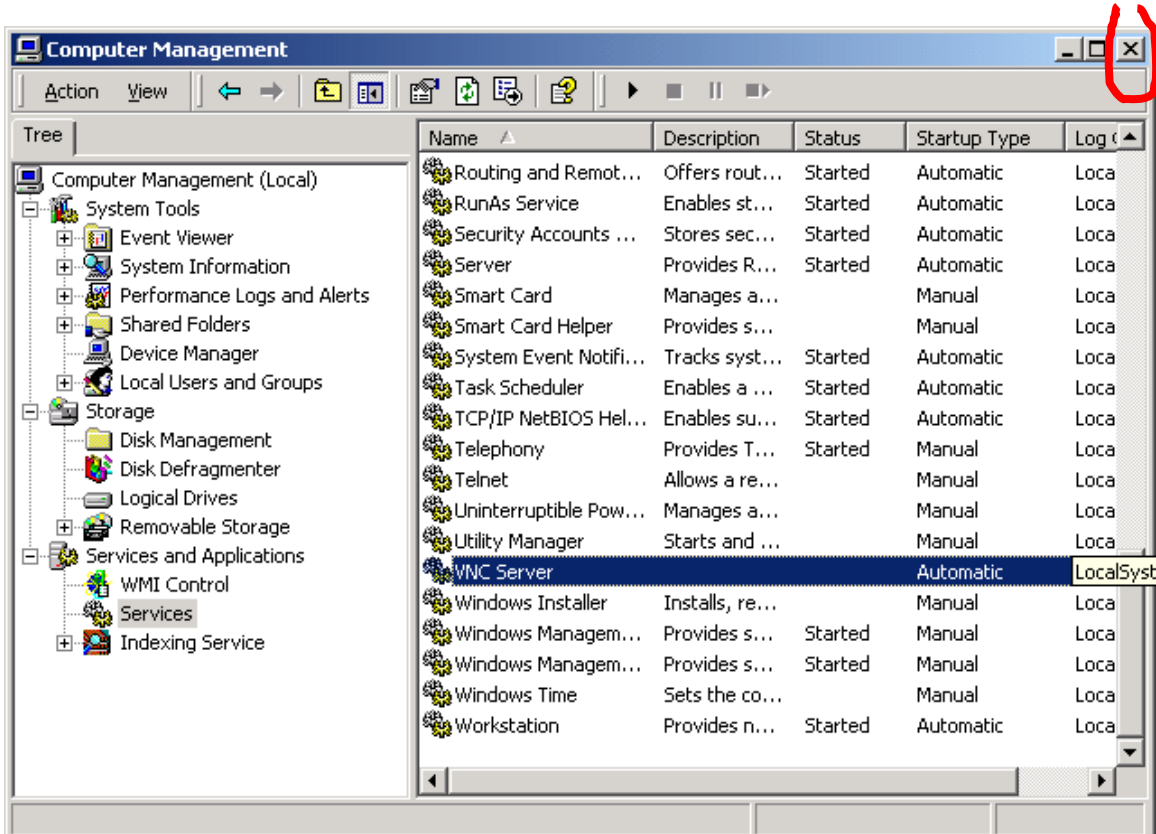
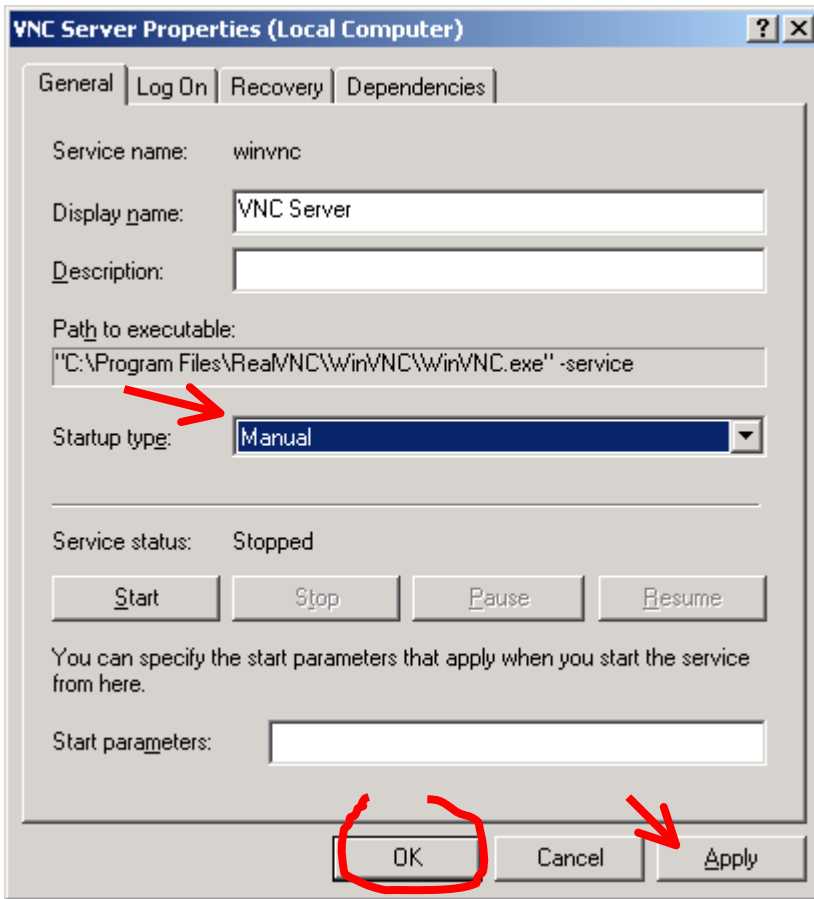
**Note:** These steps are needed if we want to disable automatic start of this service. It means that remote access from AID Support PC will be possible only if this service will be started manually.





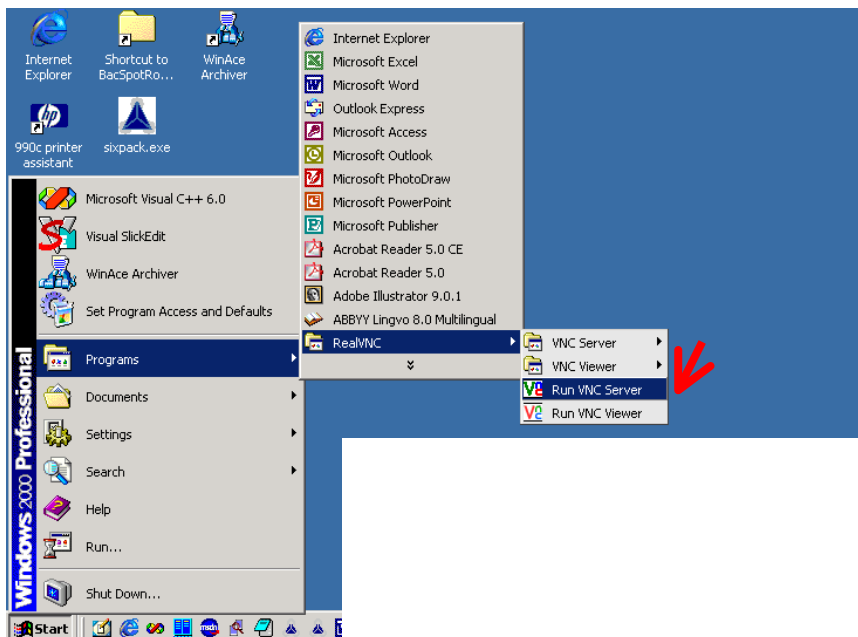




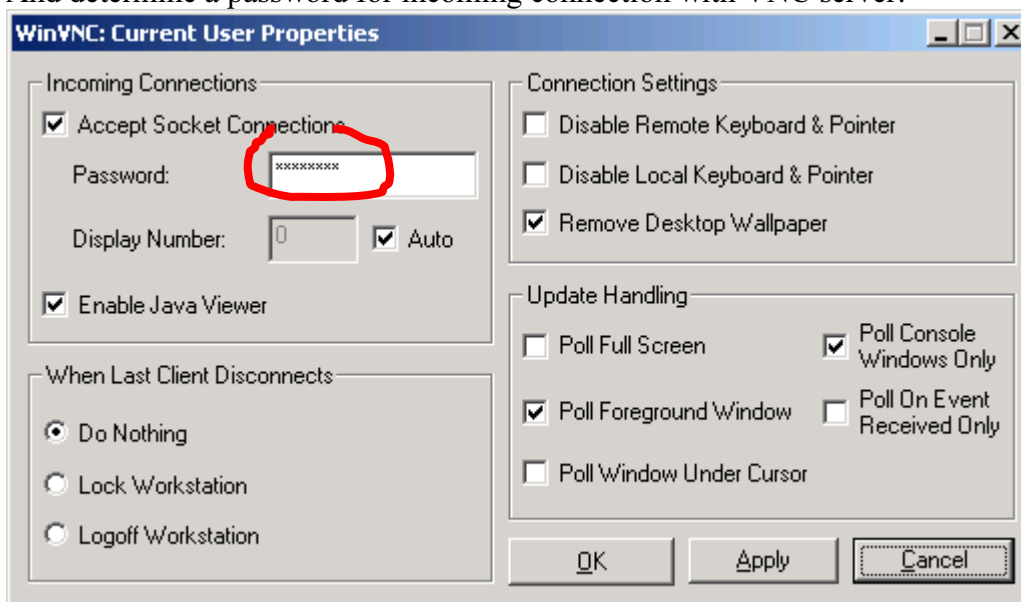


## Determining of Password for VNC server

Start VNC Server:



And determine a password for incoming connection with VNC server:



AID password for incoming connection with VNC server and additional information available from AID Support team:

Ph.: +49 7434-9364-0

+49 7434-9364-32

Fax:+49 7434-9364-40

E-mail: [Support@elispot.com](mailto:Support@elispot.com)