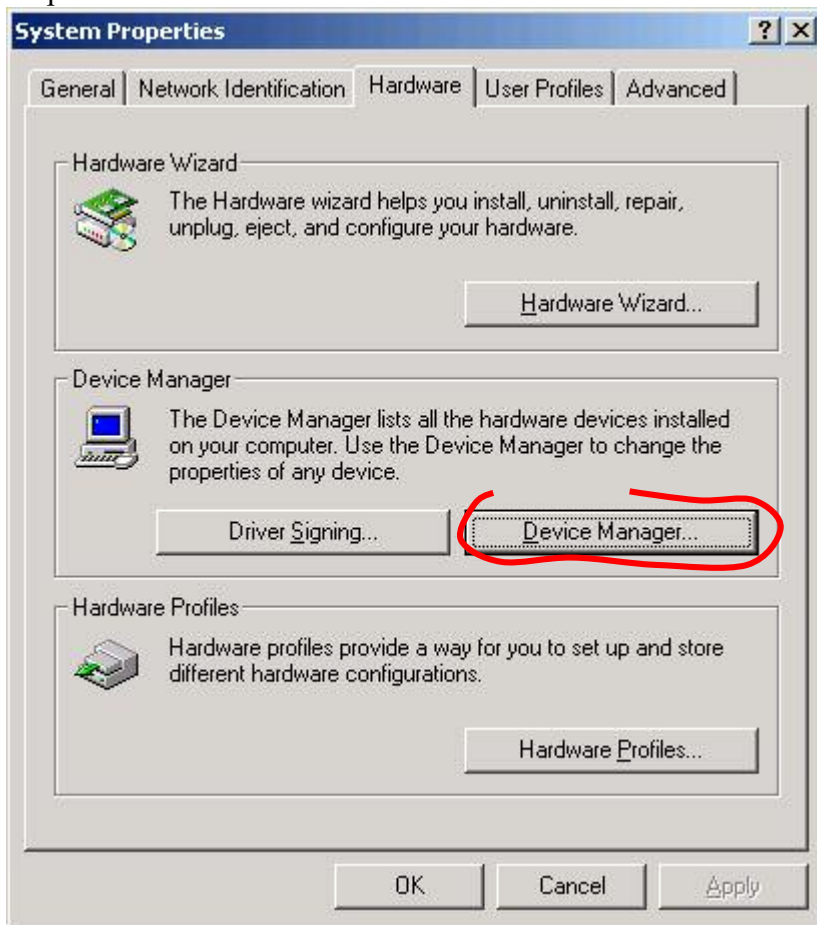


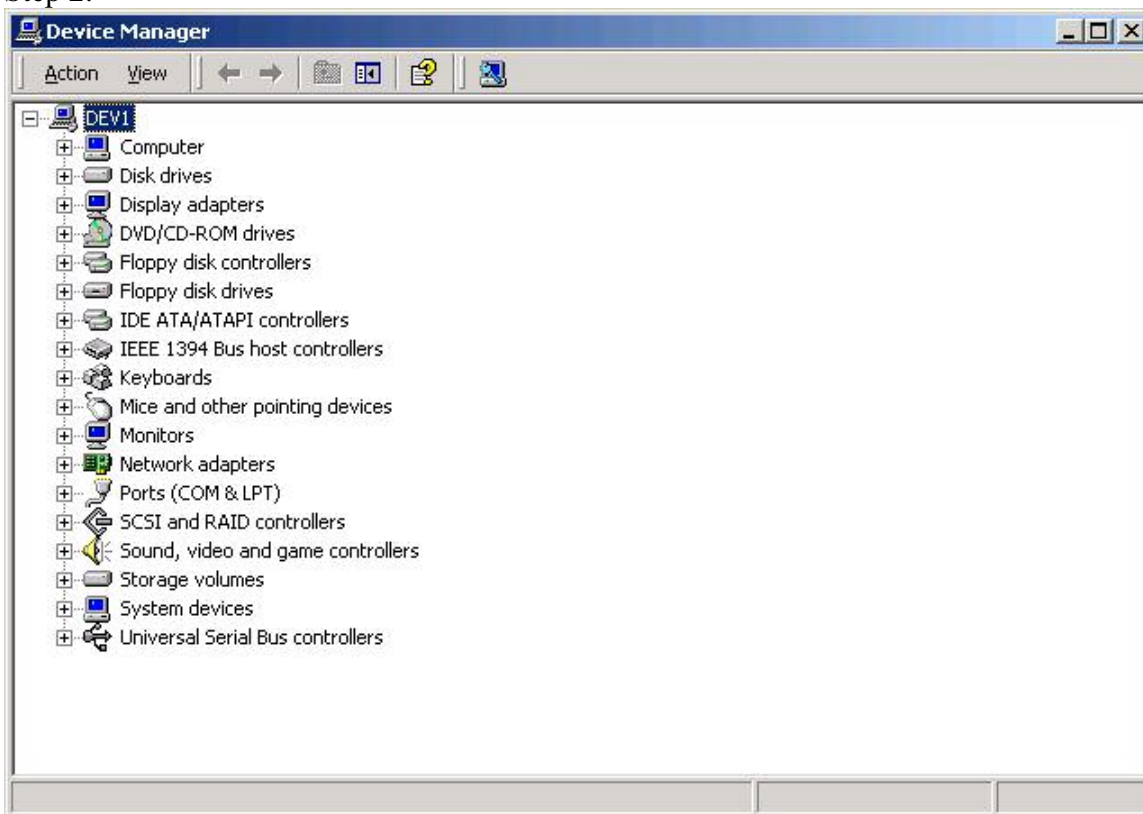
## Installation of camera driver

**(IEEE1394 cameras following DCAM- Standard and compatible with OCHILynx-1394-Hostcontroller driver)**

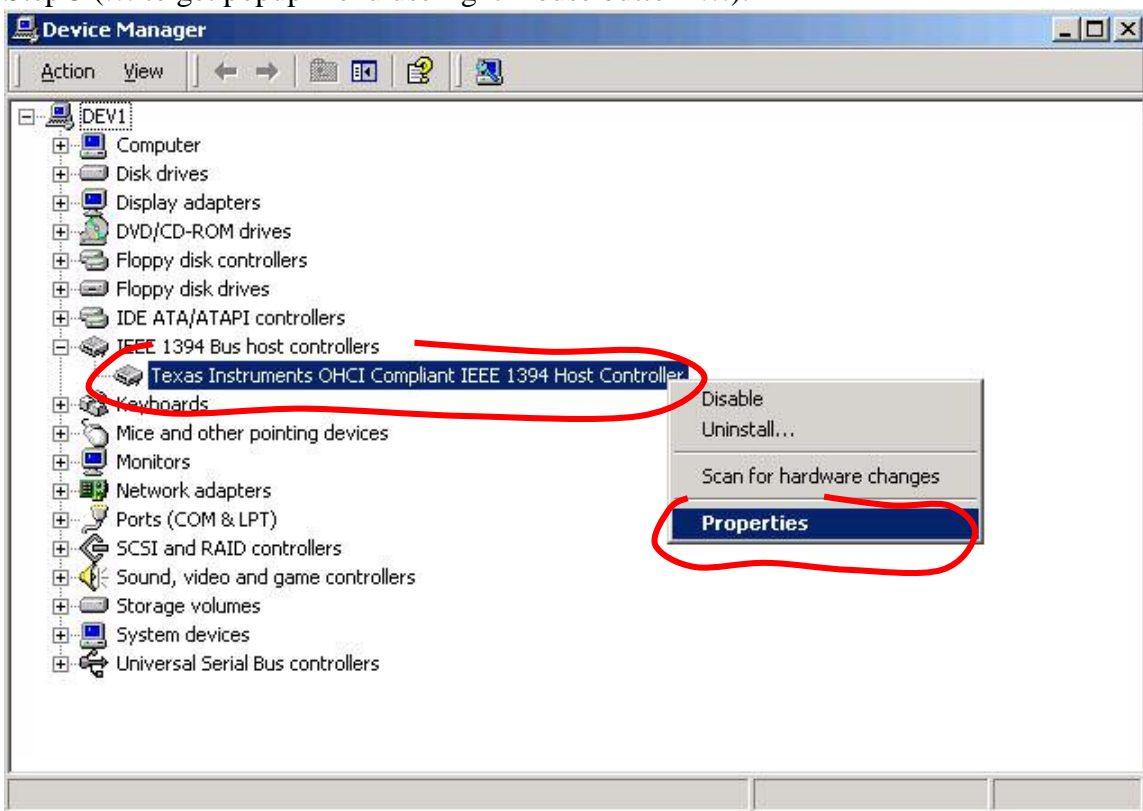
Step 1.



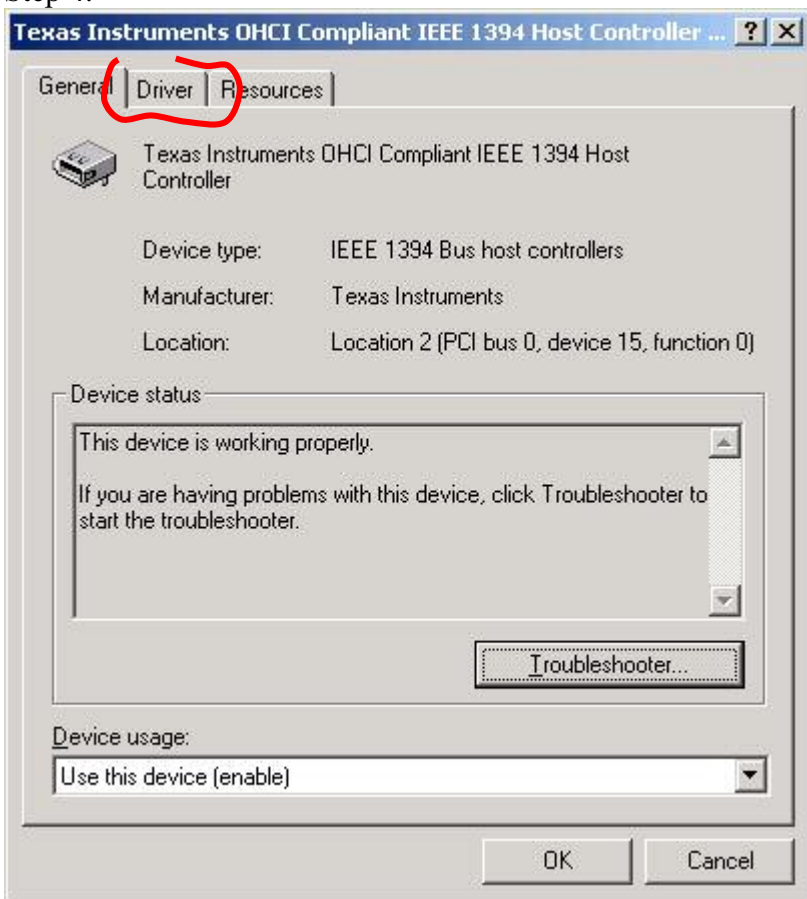
Step 2.



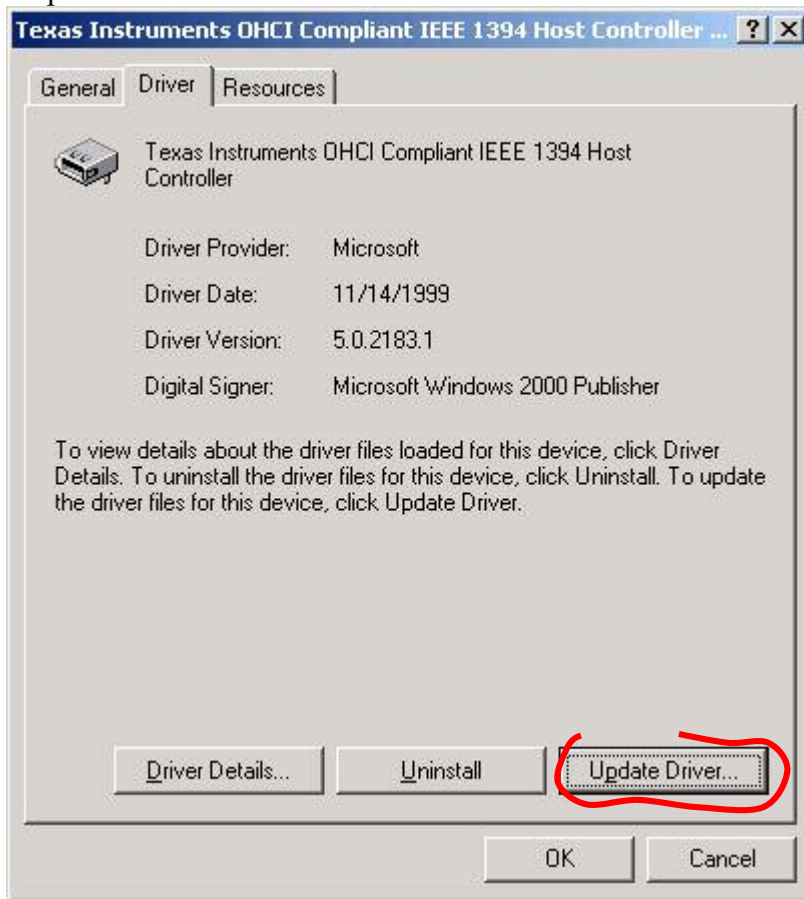
Step 3 (... to get popup menu use right mouse button ...).



Step 4.



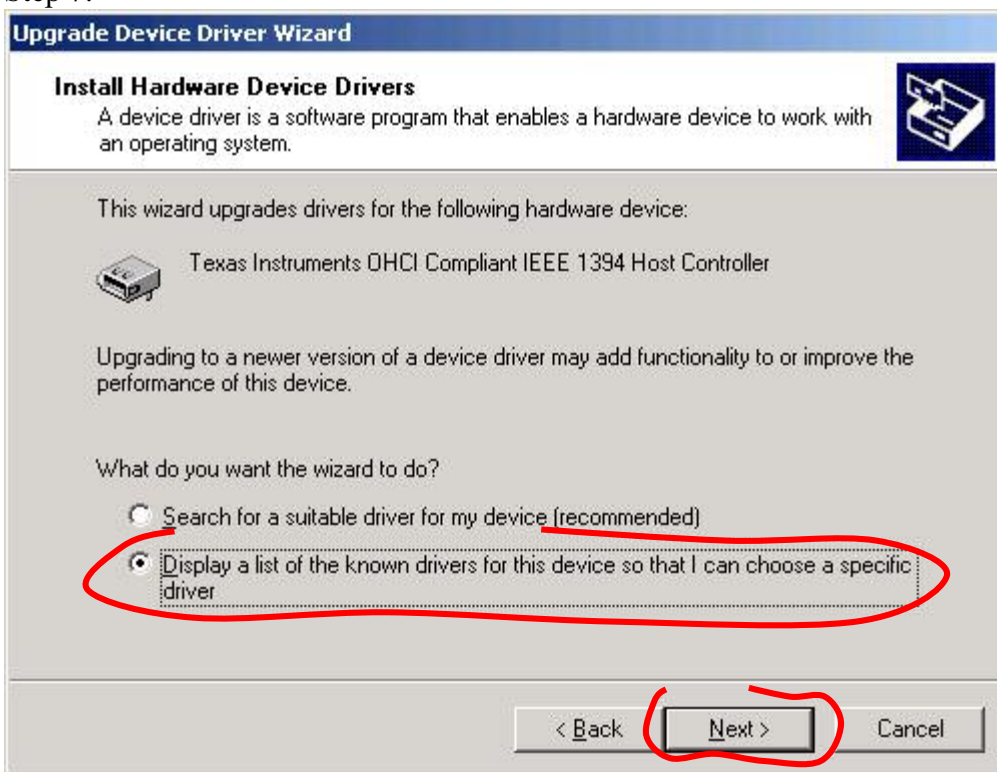
Step 5.



Step 6.



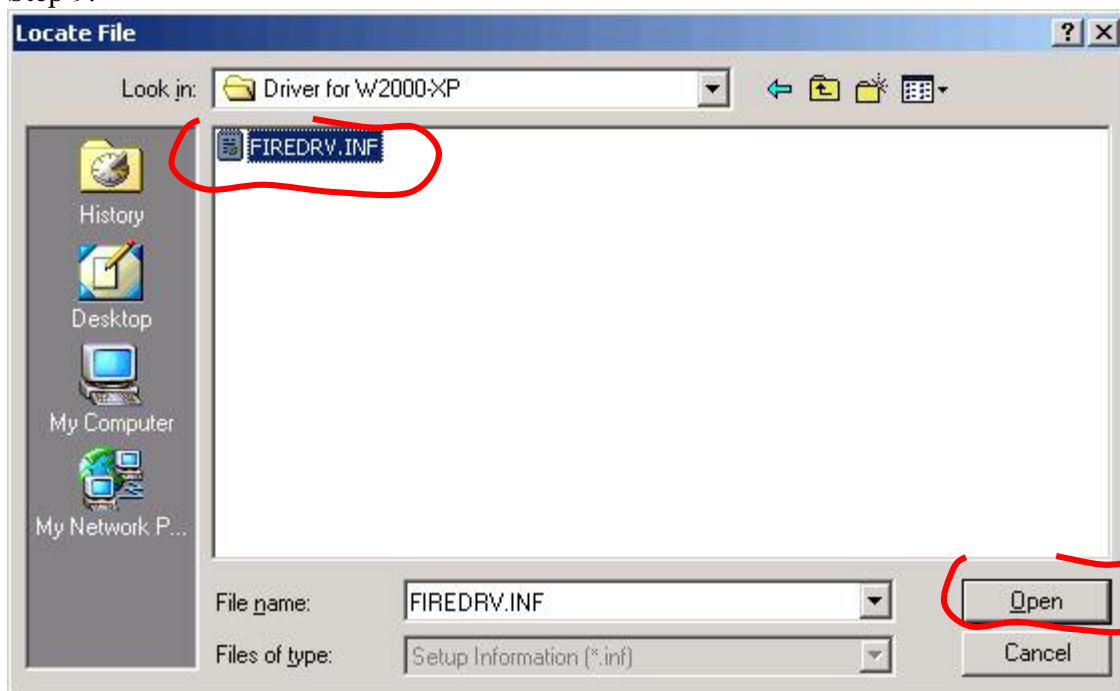
Step 7.



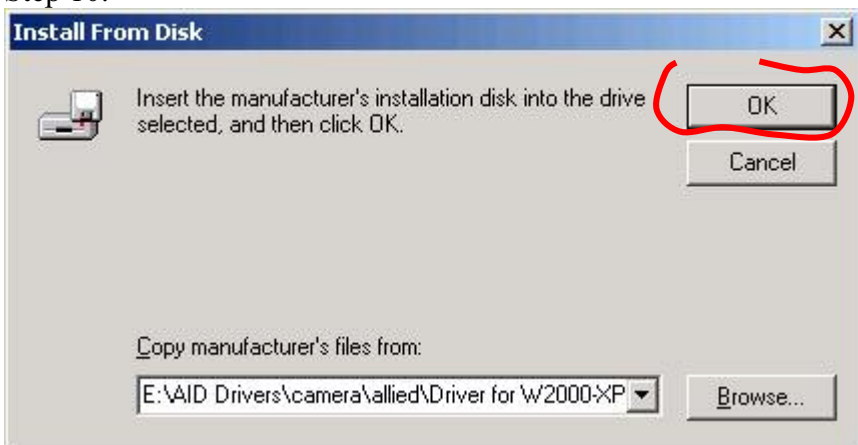
## Step 8.



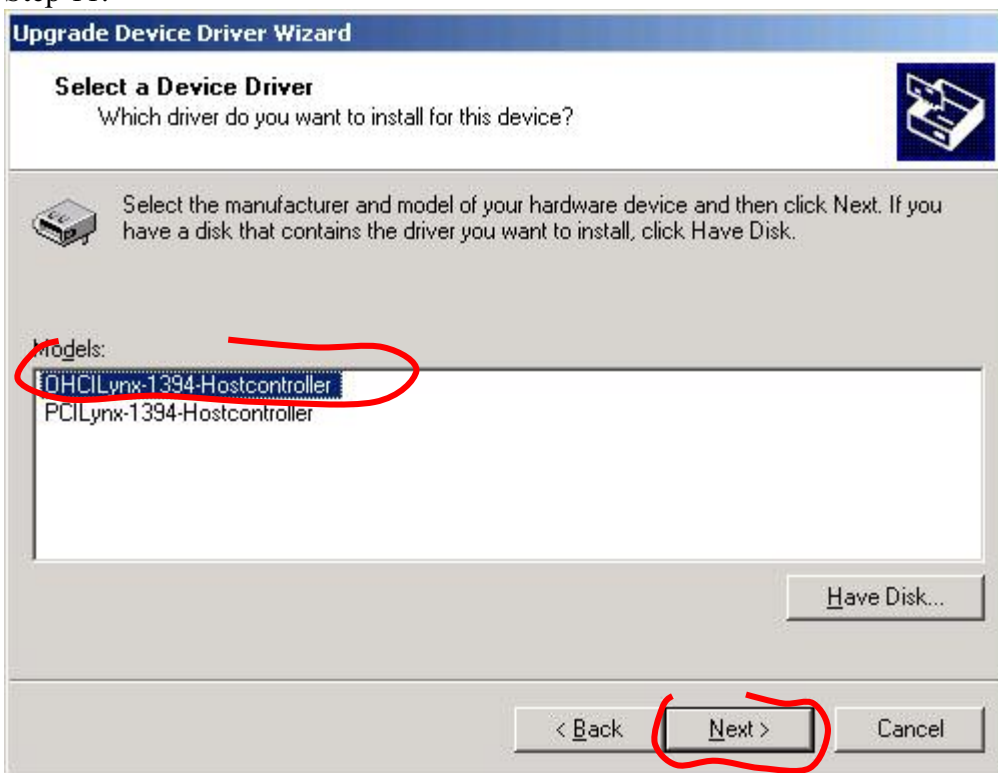
## Step 9.



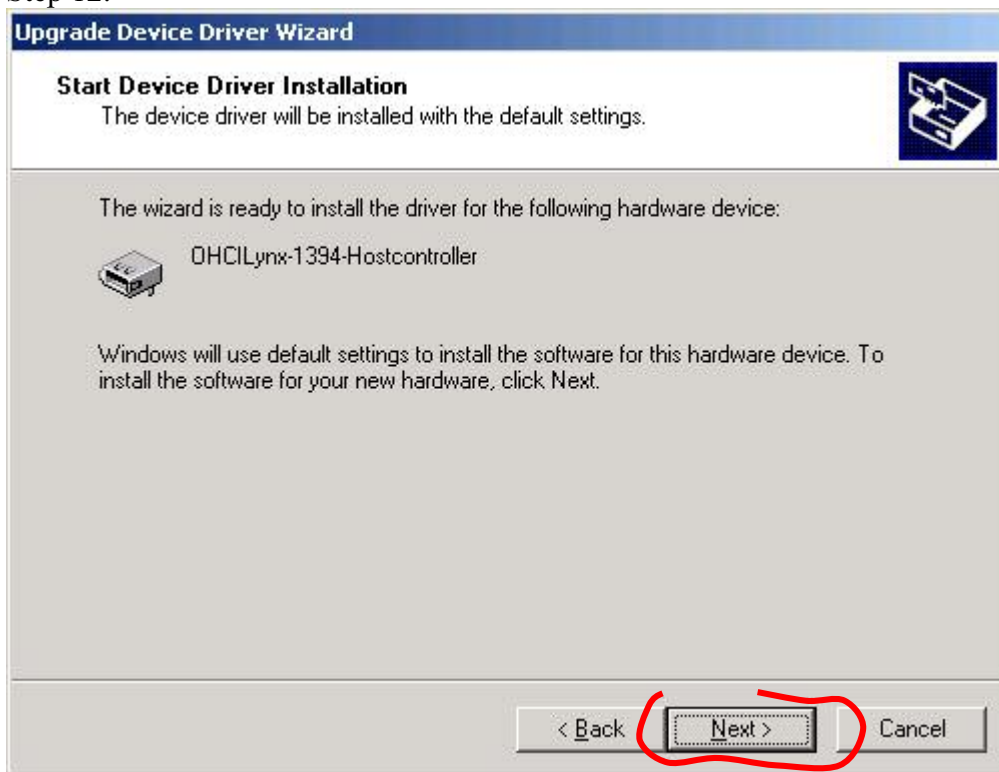
Step 10.



Step 11.



## Step 12.



## Step 13.





## Step 14.

