

INSTALLATION OF INSTALLATION FOR SONY WDM CAMERA DRIVER

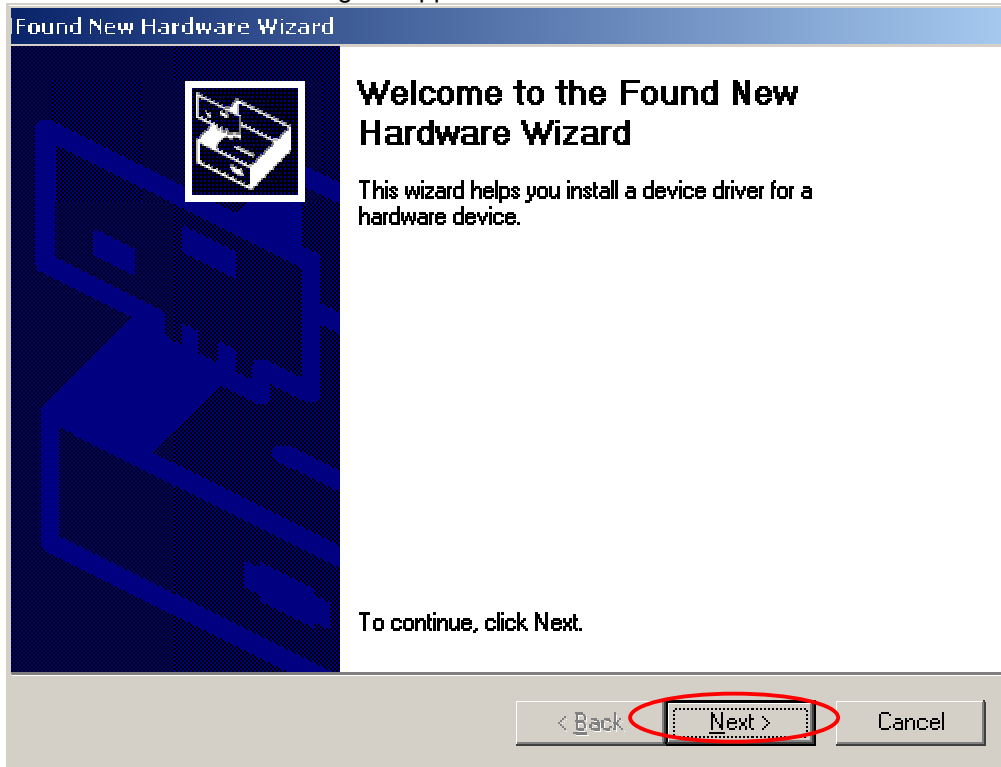
Notes: To install the driver, You need Windows 2000 installed. It is also assumed, that computer already contains FireWire controller and that the MS plug and play driver for the controller has been installed itself.

1.

- 1.1 Install DirectX version 8.1 or higher from AID CD("AID Drivers\DX81NTeng.exe").
- 1.2 Run "AID Drivers\Sony WDM Driver\setup_SonyWDM+TWAIN.bat" file from AID CD.
- 1.3 Reboot computer

2.

2.1 Connect the camera to the FireWire controller, and then switch on computer. After starting of system the "Found new hardware" dialog will appears.



2.2. Follow the next instructions on the screen.

The image shows two screenshots of the Windows 'Found New Hardware Wizard' for a Sony DFW-VL500 2.30 device. The first screenshot is the 'Install Hardware Device Drivers' step, where the user is asked what they want the wizard to do. The second screenshot is the 'Locate Driver Files' step, where the user is asked where they want Windows to search for driver files.

Found New Hardware Wizard

Install Hardware Device Drivers

A device driver is a software program that enables a hardware device to work with an operating system.

This wizard will complete the installation for this device:

SONY DFW-VL500 2.30

A device driver is a software program that makes a hardware device work. Windows needs driver files for your new device. To locate driver files and complete the installation click Next.

What do you want the wizard to do?

Search for a suitable driver for my device (recommended)

Display a list of the known drivers for this device so that I can choose a specific driver

< Back Next > Cancel

Found New Hardware Wizard

Locate Driver Files

Where do you want Windows to search for driver files?

Search for driver files for the following hardware device:

SONY DFW-VL500 2.30

The wizard searches for suitable drivers in its driver database on your computer and in any of the following optional search locations that you specify.

To start the search, click Next. If you are searching on a floppy disk or CD-ROM drive, insert the floppy disk or CD before clicking Next.

Optional search locations:

Floppy disk drives

CD-ROM drives

Specify a location

Microsoft Windows Update

< Back Next > Cancel

Choose Sony camera driver from AID CD.

