

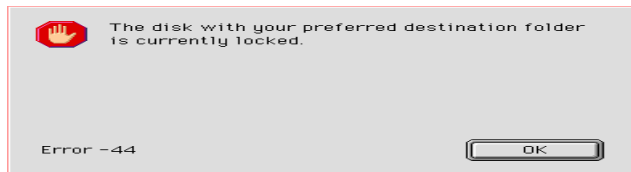
## For MAC USB/Serial Cable Setup

Step 1. Insert CD disk (USB/RS232 V1\_1), choose **Mac.sit**

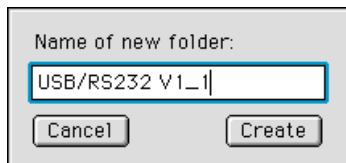


Step 2. Plug USB/Serial cable into your computer's USB port

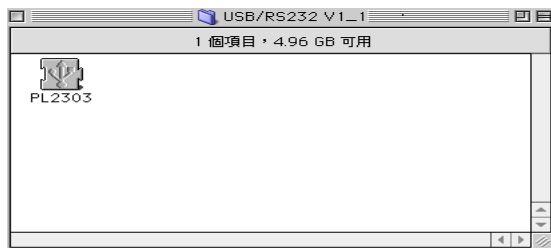
Step 3. Click **OK**



Step 4. Type your file name, and click **Create**.



Step 5. You can see the file, which you created.



Step 6. Drag file **PL2303** into system extension (Apple Extras), and then restart your computer. (As picture shows)

